

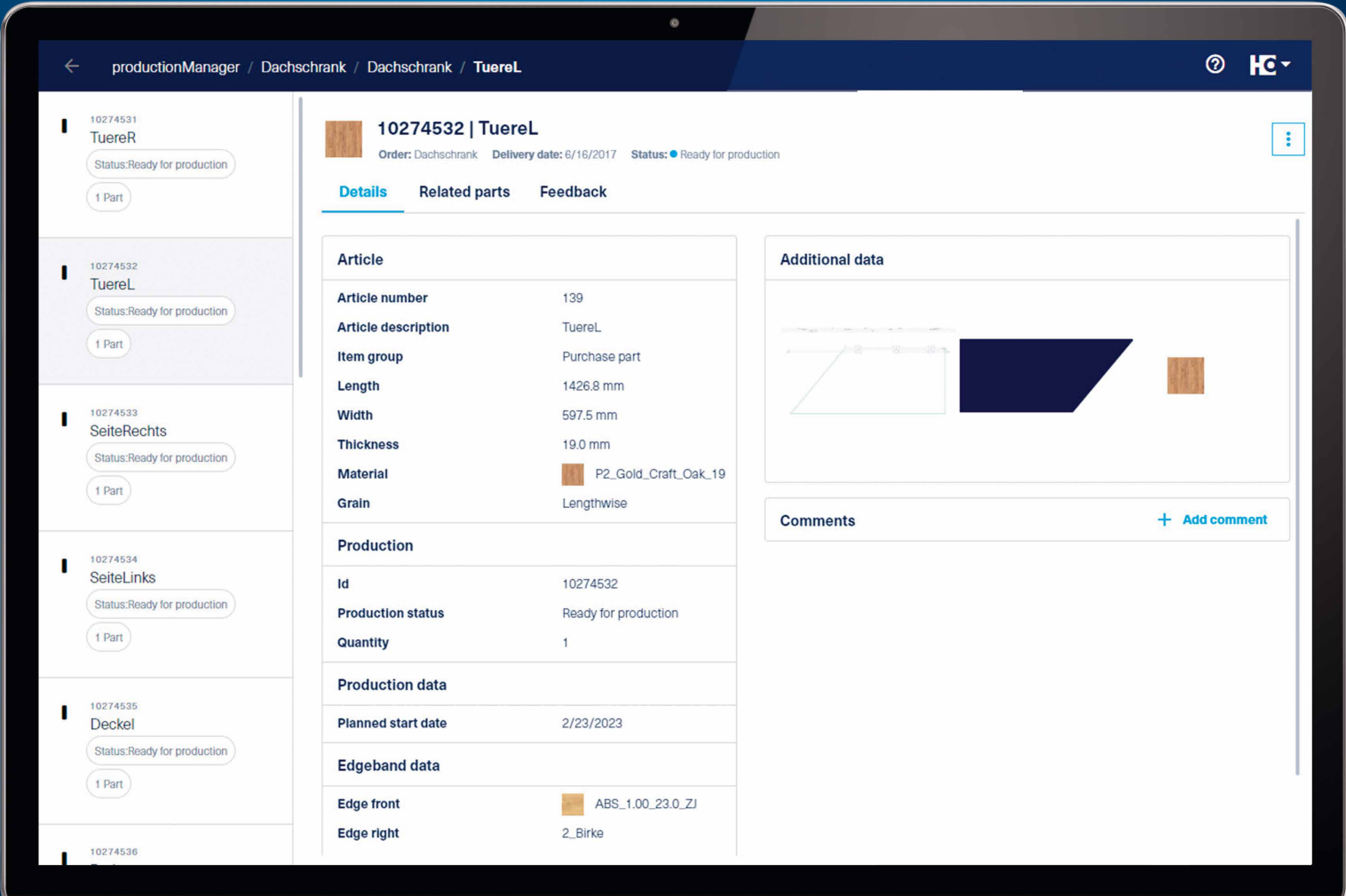
Endless paperwork is a thing of the past. Today it's all about the digital job folder.

productionManager – Digital job folder

The digital solution for work preparation and production.



My laptop is my job folder. Because good organization is the first step to success.



productionManager

The digital job folder brings transparency to your workshop.

With full order books, it is even more challenging to keep track of everything and to keep the job data and job information up to date for all employees. With productionManager, the digital job folder, everyone has access to all information about every job in real time – from the foreman's office through production and to the assembly area. But the web app doesn't just support the end-to-end organization of data: it also makes the current processing status of individual components transparent. You therefore always have an overview of the status of your jobs.

YOUR SOLUTION

Contents

- 04 The digital job folder
- 06 The functions of the digital job folder
- 12 The versions at a glance
- 13 Technical data
- 14 Apps and digital assistants



More information at
[homag.com](https://www.homag.com)

What is special about the digital job folder?

Many woodworking shops still have a lot of paper in circulation today. Information on jobs is sometimes printed out multiple times and distributed to employees in different departments. This will no longer be necessary in future, as the digital job folder ensures that all information relating to jobs is bundled centrally and that the correct information appears in the right place in work preparation and in the workshop.

The five highlights

- 1 EASY TO USE**
Very easy to get started thanks to intuitive and clear operation
- 2 SOFTWARE AS A SERVICE**
Transparent and fair costs, always up to date, regardless of the number of users or the end device
- 3 NO MORE ENDLESS PAPERWORK**
Consistent digital use of planning and design data, replacing paper documents in production
- 4 COMPLETE TRANSPARENCY**
All employees can track job progress in real time and view the processing status of items and components
- 5 BACKBONE OF THE HOMAG APP WORLD**
Optimal interaction with the HOMAG apps for perfectly networked digital production

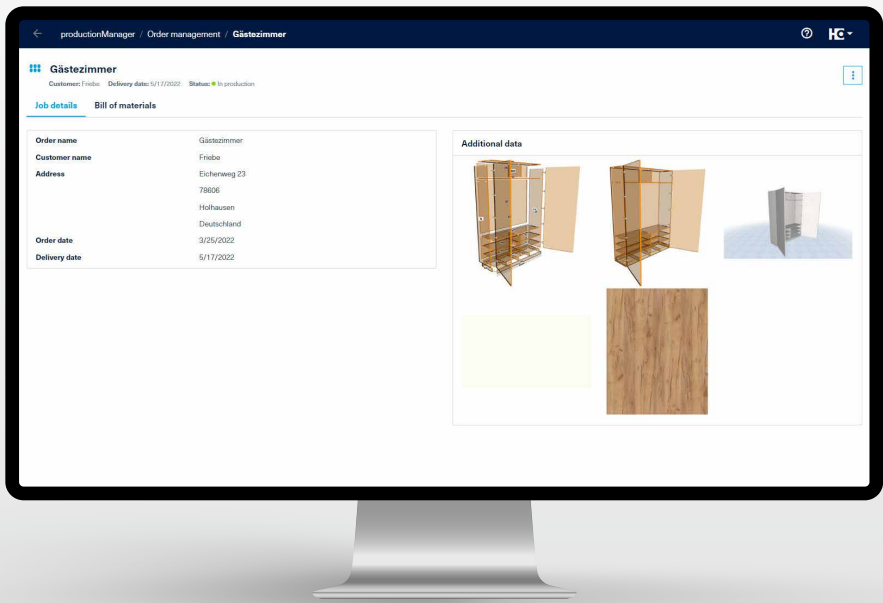
Your benefits at a glance

- FLEXIBLE INTEGRATION**
Easy to integrate into any existing workshop environment without adjustments to the software landscape or machine pool.
- DATA IMPORT FROM DIFFERENT SYSTEMS**
Create new jobs or import them directly from a CAD/CAM system, an industry solution or Excel. All job details are available to you directly in digital form.
- LOT GENERATION**
Combine your jobs intuitively – taking into account important key figures (e.g. identical materials) – into intelligent production lots and increase your productivity while at the same time saving costs and materials.
- REWORK OF COMPONENTS**
Record components for rework so that they can be quickly and smoothly reintegrated into the manufacturing process.
- SEAMLESS DATA EXCHANGE**
Thanks to coordinated interfaces with various software partners, data exchange is completely automated and straightforward. The result is a continuous data flow from a single source.



productionManager in brief:

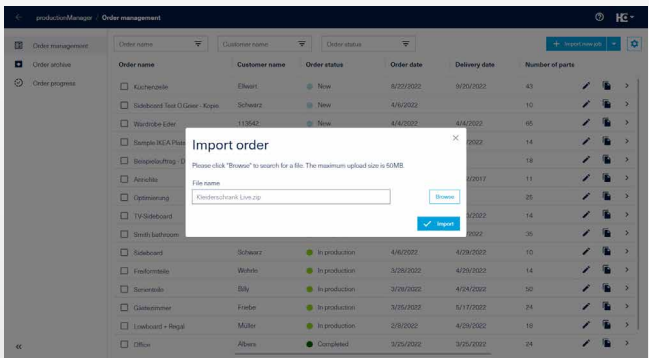
The functions of the digital job folder



OVERVIEW OF THE SEQUENCE

- The first step is work preparation. A customer job is first created or imported into the digital job folder.
- After the import, missing information, such as images, sketches, drawings or special parts such as fillers, can be added to the job together with the parts list.
- As soon as the order is ready for production, it is released and the parts list can either be sent directly to the intelliDivide optimization software or exported for a cutting optimization of your choice (e.g. Cut Rite).
- The release makes the job – items, assemblies and components, including the associated information such as drawings – ready for production and visible in the digital assistants.
- During production, items, assemblies and components are reported as completed by the digital assistants (production-Assist Cutting, productionAssist Nesting, productionAssist Sorting and productionAssist Feedback) or directly by the machine.
- The completion messages from production are processed in productionManager and automatically displayed as the order progress.
- The production status of a job is displayed in real time in the order progress.

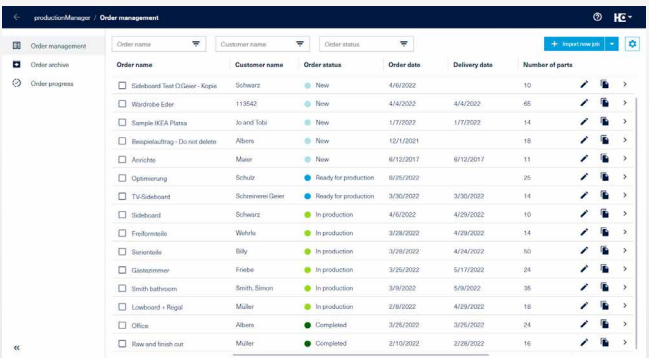
With productionManager, you can therefore always keep an eye on your jobs and know where each job is in production at all times.



IMPORT OR CREATE A JOB

You can import data in two ways: via the parts list or the job import. Alternatively, you can also create a job manually.

- Data can be imported from various systems: e.g. from an industry solution, Excel, an ERP or CAD/CAM system (regardless of the format).
- Import templates can be created and saved for the import of the parts list.
- Automated job import via coordinated interfaces to industry-typical systems such as imos iX, BormBusiness, SmartWOP and SWOOD.
- Create a parts list directly in productionManager. All data is available to you in digital form.
- Store drawings, sketches, fixture lists or other documents, for example.



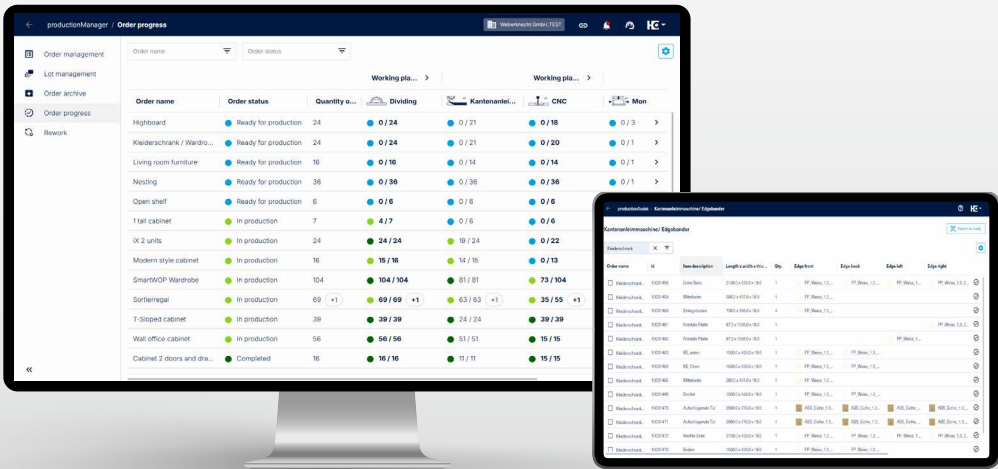
MANAGE AND RELEASE A JOB

The job management system provides you with an overview of all jobs and their status. As soon as the job is ready for production, it can be released and optionally exported to a cutting optimization system of your choice, e.g. intelliDivide.

- Central job management: See all jobs at a glance and navigate to the job details at any time. The job status shows you the current stage of the job, e.g. "in production".
- Released jobs are ready for production, including items, assemblies, components and all associated information.

productionManager in brief:

The functions of the digital job folder



JOB PROGRESS

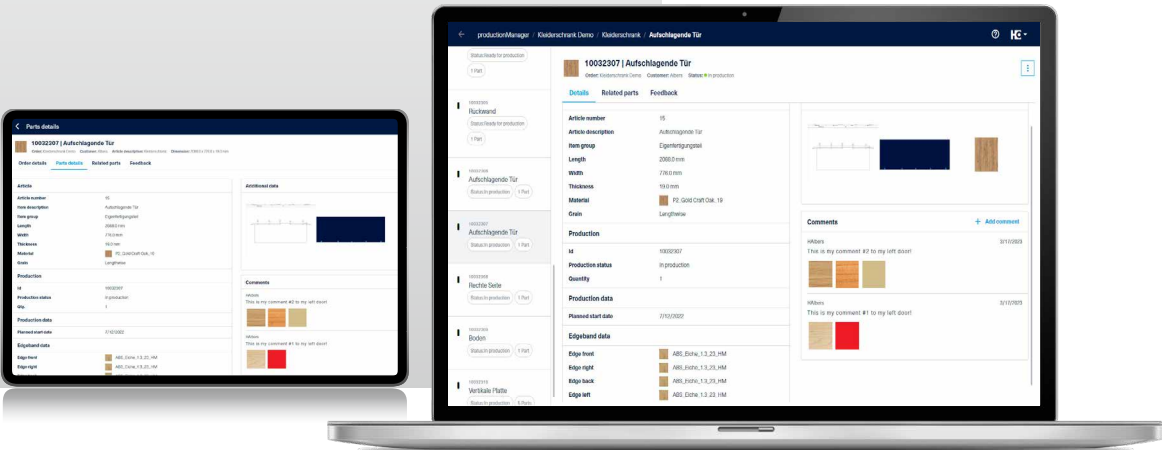
Overview of the production progress of all jobs in production for each workstation group and workstation.

- During production, items, assemblies and components are reported as completed by the digital assistants (e.g. productionAssist Cutting or productionAssist feedback) or the machine.
 - Feedback can be provided either via the app or directly via the HOMAG machine, as the machine and productionManager communicate with each other via coordinated interfaces.
- Feedback via the app can be provided either by scanning (using a hand-held scanner or tablet) or by clicking in the app.
- The completion reports from the feedback workstations are processed in productionManager and visualized in job progress. The production progress of a job is displayed in real time in job progress.

ADD COMMENTS

Record comments with images and files – both in productionManager and in the productionAssist digital assistant

- Comments are entered directly for the corresponding component or item. The comments can therefore be displayed in relation to specific parts.
- Images and files can also be added to a comment in the "Attachments" area.
- Responsible employees receive a notification by e-mail or directly in the app as soon as new comments have been entered.
- No one-way street, communication in both directions: Comments can be added in both productionManager (work preparation) and in the digital assistant (production).



FEEDBACK WORKSTATIONS

The components and items to be processed are displayed in a feedback workstation, productionAssist feedback. Optionally, any number of feedback workstations can be set up so that production can be digitally replicated.

- Feedback to productionManager on which components and items have been processed at each workstation.
- Items and components can be reported as "finished" by scanning (tablet/scanner) or by clicking on them.
- Predefined filters for the most important workstations and an overview of the worklist
- Can be used for all workstations in production and in the assembly area



This was also why we decided to test and use productionManager at the beginning of the year, as no other system offers this level of transparency. The crucial point was having an overview of all jobs and always being able to immediately record the scheduling.

Katharina Höppner, employee and project manager, ZB Holzsysteme GmbH

productionManager in brief:

The functions of the digital job folder

REWORK

Record rework digitally – quickly and efficiently return components to the production process.

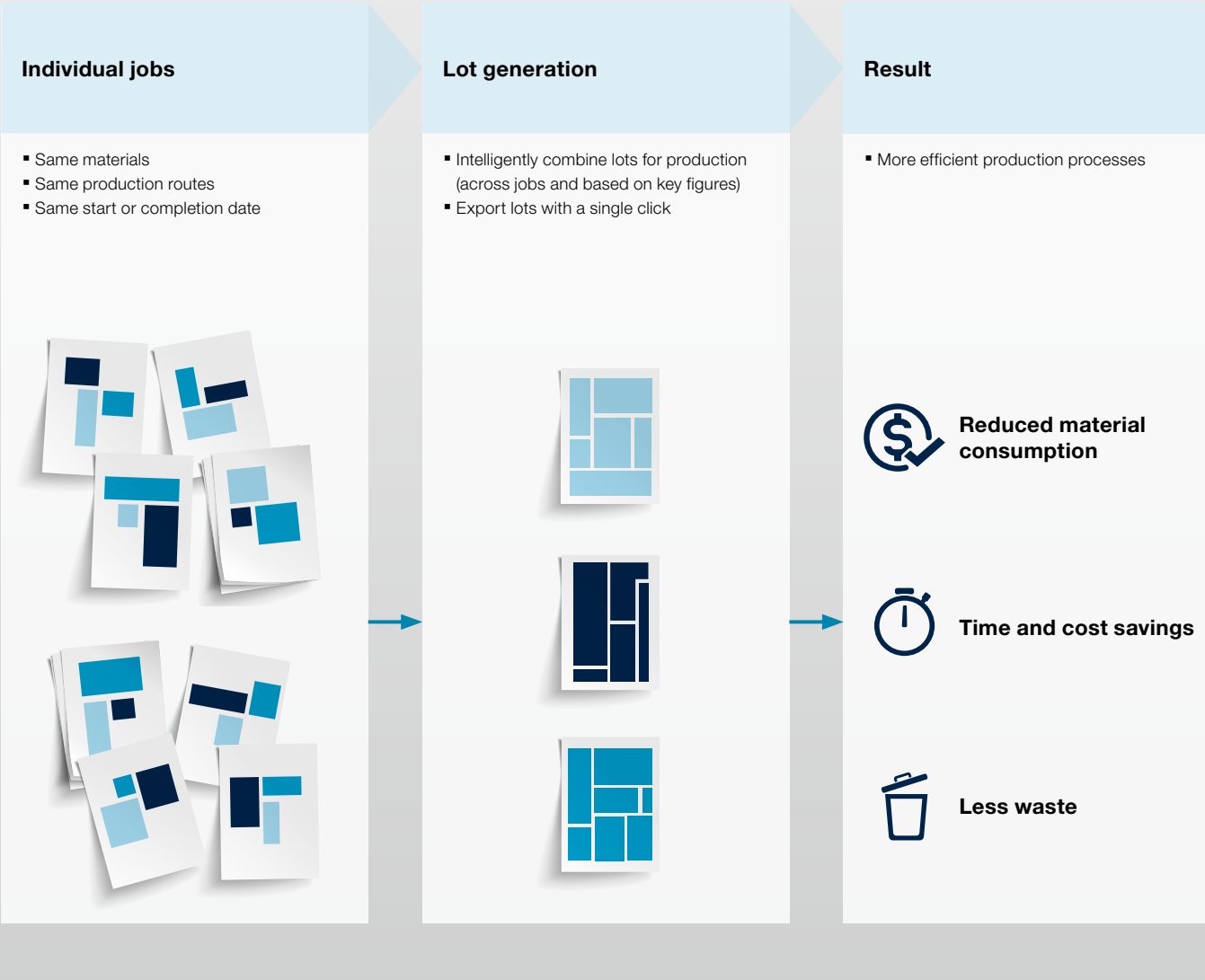
- Defective or damaged components are recorded by scanning, confirmed with a click and displayed directly in productionManager as a rework.
- For fast and targeted processing, the digitally recorded rework can optionally be supplemented with additional information, e.g. photos, additional comments or reasons for errors.
- The current status of the rework is displayed in real time in productionManager job progress. This means that every employee, regardless of whether they are in work preparation or production, has an overview of all rework at all times.
- As all information for rework is bundled and displayed in productionManager, post-produced components are quickly and efficiently reintegrated into the production process.



LOT GENERATION

Combine jobs into lots with a single click. This not only increases productivity, it also reduces material consumption.

- With the lot generation function, jobs are combined into intelligent lots with a single click, taking important key figures (e.g. identical materials) into account.
- Creating lots for production based on key figures (e.g. same panel material and edge material) reduces material consumption, saves costs and increases productivity at the same time.
- The lots can be transferred directly to a cutting optimization system of your choice (e.g. IntelliDivide) or exported via a cutting list.
- In productionManager, the status of the lots ("New", "Ready for production", "In production") is also displayed clearly and transparently.



Licensing

The versions at a glance

You purchase a company license for productionManager. This means that you only book the app once and can add as many users as you like.

		productionManager Classic	productionManager Advanced
Scope of functions	Order management	✓	✓
	Job progress	✓	✓
	Rework	–	✓
	Lot generation	–	Available as an option
	Add individual property fields	–	✓
	Number of released components per month	2500	10,000
	Additional parts packages	Optional expansion (2500/10,000/100,000)	Optional expansion (2500/10,000/100,000)
Import and export	Import of parts lists (manual and automatic)	✓	✓
	Export of parts lists	–	✓
	Export of cutting lists for cutting optimization	Standardized	Configurable
	Automatic transfer of a parts list for intelliDivide cutting optimization	Standardized	Configurable
	Automatic transfer of CNC programs, including entry of a unique ID	–	✓
Interfaces and data	Coordinated interfaces to various software partners	Available as an option	Available as an option
	Flexible connection to ERP systems/industry solutions (via API interface)	–	✓
	Use of formulae and rules	–	✓
Feedback from components	Number of feedback workstations included (productionAssist feedback)	1 (others available as options)	1 (others available as options)
	Manual feedback (via tablet/scanner)	✓	✓
	Automatic/machine feedback	✓	✓

Complete networking

Interfaces and automation

HOMAG File Agent

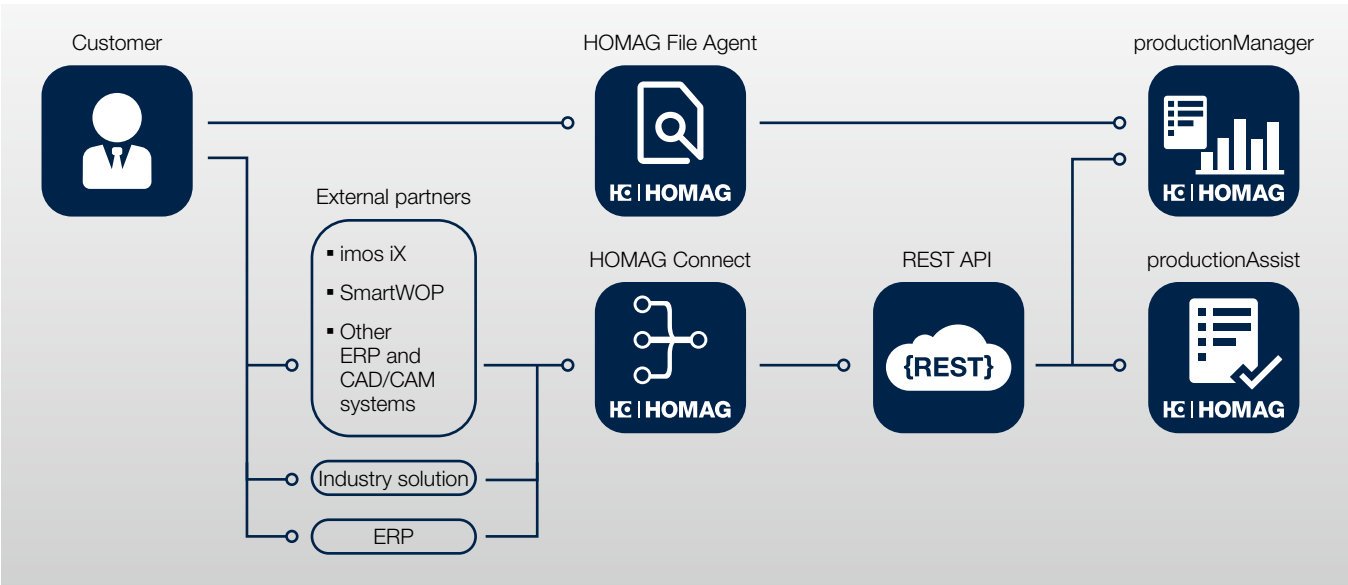
Automated data exchange between productionManager and work preparation

- The HOMAG File Agent is software that HOMAG provides free of charge if your machine only offers limited or no connectivity, or if no coordinated interface to your software is available in work preparation.
- With HOMAG File Agent, you can automatically process feedback data provided on the machine.

API interface

The remote control of productionManager

- This interface enables functional integration of productionManager into customer systems such as ERP systems or industry solutions.
- An authorization key is required to access the API.
- The following CAD/CAM and ERP systems already offer the interface to productionManager: Borm, imos iX, SmartWOP, SWOOD, OSD.

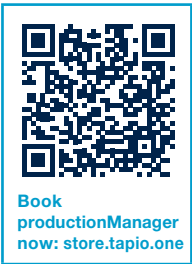


In the background

Technical data and requirements

You can use productionManager directly in your Internet browser on any number of PCs or laptops. For you, this means no time-consuming installations. And the application is always automatically up to date.

Use	Browser application for use on PCs, laptops and tablets
Browser	We recommend Microsoft Edge, Google Chrome or Apple Safari
Internet access (DSL, UTMS, LTE)	At least 5 Mbit/recommended 50 Mbit
Logging in	Via tapio login (tapio account required) Registration at: www.tapio.one



Apps and digital assistants.

Quick and easy support in your machine environment.

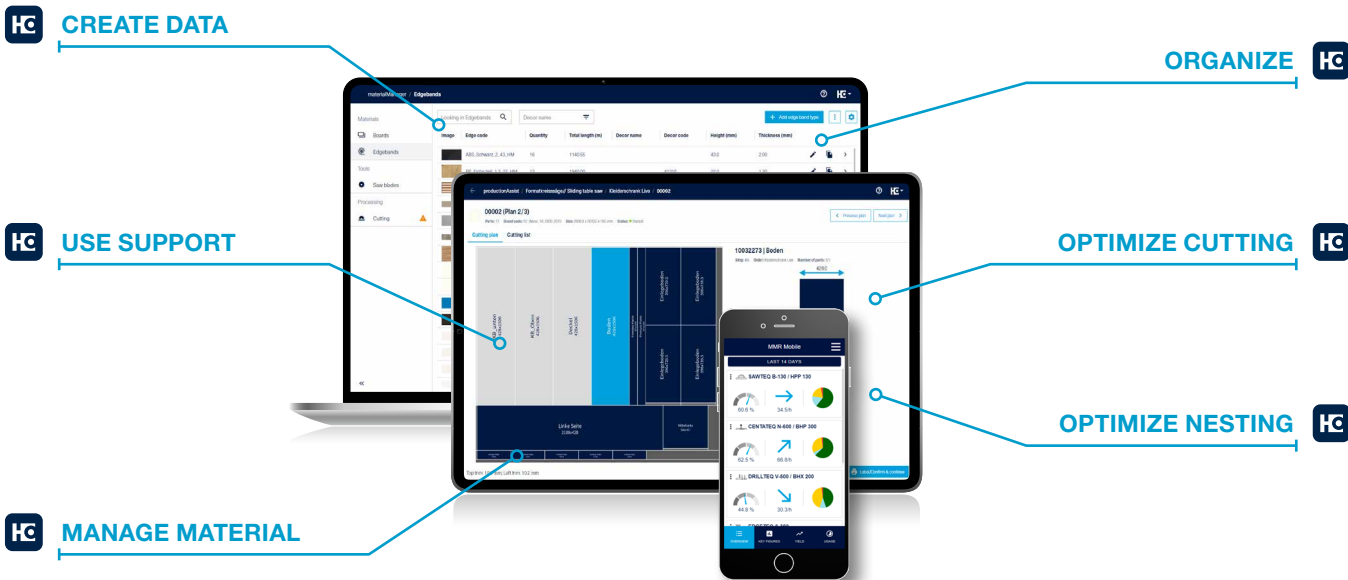
Some people still use pen and paper to create their cutting patterns. But they look at their smartphone if they want to know what the weather is like – instead of looking out of the window. We asked ourselves: why not combine the best of both? Our apps and digital solutions make your everyday work easier: machines, material, tools, cutting patterns, components – you always have everything in your pocket or on your desk.

EXCERPTS FROM YOUR FEEDBACK:

- Are there simple solutions that can eliminate various obstacles in my day-to-day work (e.g. when organizing materials or sorting parts)?
- Is there a way to slowly approach using digital assistants?
- Which tools can you try out simply and easily without having to invest huge sums of money straight away?

OUR ANSWER? SMART AND POWERFUL SOLUTIONS:

- ✓ Always low investment
- ✓ Always up to date (no updates necessary)
- ✓ Always easy to use (no complex software)
- ✓ Always helpful



THE ADVANTAGES AT A GLANCE

- No investment, update or maintenance costs
Low starting price, no unplanned financial expense
- Licenses are independent of the user
Any number of employees can use the application without incurring additional costs
- Independent of hardware and operating system
Can be used anywhere, anytime
- Open system – import possible from almost all systems (ERP, industry software, CAD/CAM, Excel, CSV)
No obligation to use specific software systems
- Simple, smart operation
Minimal training required
- More efficient production
Jobs completed more quickly, more safely and in higher quality



More information at
digital.homag.com



HOMAG Group AG

info@homag.com
www.homag.com

YOUR SOLUTION