

# **Modernization for your CNC processing center**

**LIFE CYCLE SERVICES**





# An investment in the future: Modernizations from HOMAG.

It is important to us that we provide optimal support for your machines over their entire life cycle. We therefore offer varied and individually tailored modernization options. We make sure that your machine can produce competitively for even longer. We support you as a company, so that with our solutions you are well positioned, even in the face of changing requirements in the technology of the products or the needs of the customers.

## YOUR SOLUTION

[MORE AT HOMAG.COM](https://www.homag.com)



MODERNIZATION

## CONTENTS

- 04 Clamping equipment
- 05 Software solutions
- 07 Functional extensions
- 08 Further options
- 10 Units
- 14 Life Cycle Services





## Modernizations that make work easier.

Keep your machinery up to date and increase your productivity as well as your product quality. This is how you can meet tomorrow's product requirements today! We support and advise you on the development of customized solutions as well as on upgrades and possible modernizations.

## Well-clamped



### Multi-clamps

- Vacuum-actuated clamping element for clamping strips and scantlings
- Grid adjustment of the upper plate for quick adjustment of the clamping area



### Jamb and scantling clamps

- Mechanical/pneumatic clamping elements with adjustable clamping jaws for secure clamping of stair posts, beams, squared timber etc.
- Thanks to the horizontal clamping, you can process the workpieces from above and from the side in the best possible way

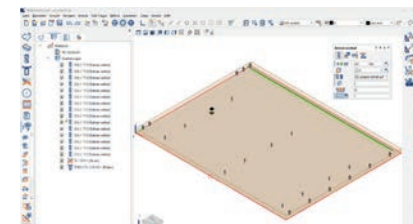


### powerClamp clamping elements

- Mechanical/pneumatic clamping elements for clamping squared timber, curved parts or stacks of panels
- High holding force for performance-oriented machining
- Flexible and requirement-specific clamping options
- Clamping options for all specific forces

For more information, see our [unit and clamping equipment catalog](#), QR code, p. 11

## Software solutions

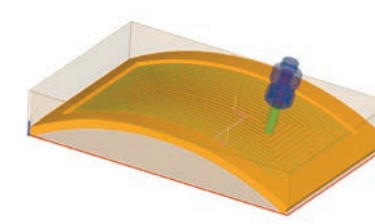


### woodWOP 9.0

The new version of woodWOP focuses on simpler and faster operation. Programming processes have been optimized and the user is supported by new wizards.

#### How you benefit:

- New design incl. dark mode
- Favorites mode
- Drag & drop of contours and macros



### woodWOP CAM plug-in

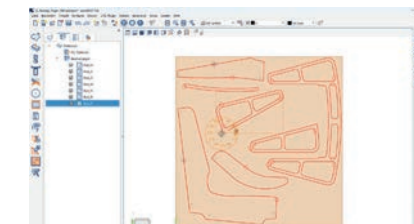
Programming of roughing down, finishing, peripheral trimming, sawing on surfaces, etc. of 3D objects

#### Basic version:

- Processing with a vertical adjusting axis in the XYZ direction

#### Professional version:

- 3/4/5-axis interpolating processing



### woodWOP nesting plug-in

The woodWOP nesting plug-in enables manual nesting of individual programs in woodWOP. Minimum distances to the unprocessed panel edge and to adjacent parts are automatically monitored. The formatting macro then automatically generates the required milling paths for separating the parts.

#### How you benefit:

- Simple programming
- For occasional nesting without separate nesting software

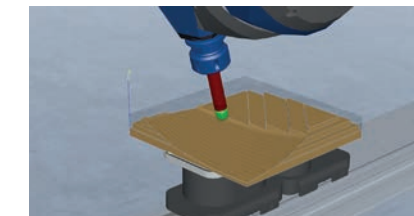


### Flexible software use thanks to floating licenses

Floating licenses enable the server to manage the software licenses for several users in a network. Convert your single station licenses into floating licenses at any time.

#### How you benefit:

- Management of licenses on one server
- Greater flexibility



### woodMotion (3D CNC simulation)

Processing simulation with material removal by woodWOP programs at the work preparation station and directly at the machine. Simulation of all processing steps including DIN code based on virtual machine.

#### How you benefit:

- Detection and avoidance of errors and collisions as early as the work preparation stage
- Optimized production process
- Ability to plan thanks to time determination in batch mode



### Cut Rite nesting

Software for optimizing panel-shaped materials and nesting parts with any contours for processing on CNC nesting machines.

Additional Cut Rite Industry option for improved material utilization thanks to additional nesting core.

#### How you benefit:

- Combination of cutting and final processing
- Single parts do not need to be placed in intermediate stacks unnecessarily
- Material costs can be reduced
- The total processing time is reduced



# Software solutions



### Windows 10 update

A software and hardware upgrade of the operating system makes your machine future-proof.

**How you benefit:**

- Options for further software updates
- Better performance in conjunction with new hardware
- Improved IT security/virus protection
- Improved TeleService connection

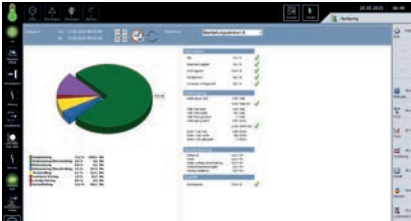


### Tool life travel calculation

Use the tool life travel calculation to monitor the use of your tools.

**How you benefit:**

- Optimize tool usage
- Select the optimal tool
- Prevent standstills



### Machine monitoring and reporting — Upgrade to MMR professional

The optimal use of machines and systems is one of the critical success factors in production. With the upgrade to MMR professional, potential for optimization can be identified to increase production and output.

**How you benefit:**

- Optimization of production
- Increase in the production readiness with preventive maintenance measures
- Efficient machine deployment due to transparent, uniform display of key figures



### woodWOP components for the Lamello P system

These components enable you to integrate the processing steps in a time-saving manner.

**How you benefit:**

- Faster programming
- Fewer errors due to finished component



### Lamello P system modernization package for THE DRILLTEQ V-200

Optimal creation of the trimming contour in the workpiece. Consisting of extraction hood, press-on device, woodWOP component for the Lamello P system, as well as a disk and shank miller.

**How you benefit:**

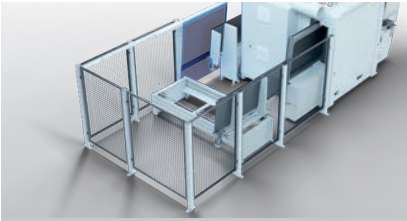
- Amplification of the suction power
- Optimized press-in device
- Less effort

MORE AT HOMAG.COM



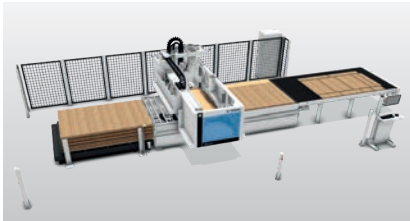
FURTHER SOFTWARE SOLUTIONS FROM HOMAG

# Functional extensions



### Automatic return system

- Shorter walking distances for the machine operator
- Increases output
- Robot connection possible
- For horizontal processing centers (DRILLTEQ V series)



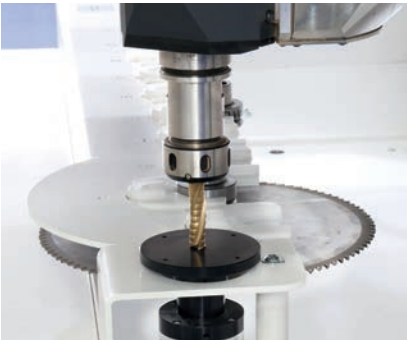
### Operation of nesting and console machine

- Options for further automation of your nesting machine
- Connection to a storage system possible via roller conveyor



### Convenient operation

- Operating functions can be activated directly on the machine at the touch of a button
- The comfort scanner monitors the area to the side and, if necessary, stops the processing before contact is made with a bumper
- The comfort scanner can be deactivated using a softkey in the control system



### Tool length check

Monitor your tool inserts with the tool length check.

**Use this data to:**

- Optimize tool usage
- Select the optimal tool
- Prevent standstills

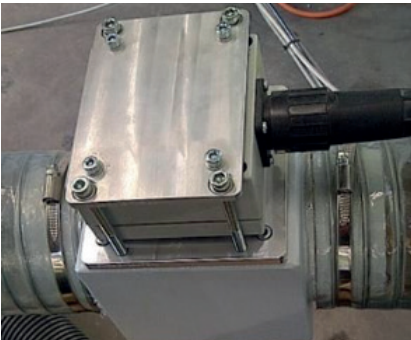


### Cooling unit for switch cabinet

Thanks to active cooling of your machine's switch cabinet, you are ideally equipped for the hottest time of the year.

**How you benefit:**

- Increased machine availability due to low downtimes
- Longer service life for the electronic components



### Smoke detector for R-table vacuum system

The use of smoke detectors integrated in the vacuum system means that you will be warned in case of a fire.

**How you benefit:**

- Automated program abort and speed stop
- Warning with acoustic signal
- Reduction of damage to the machine and peripherals





## Further options



### Optimized availability thanks to a passive spindle cooling

With a modernization, you increase both availability and the service life of the spindle. Passive spindle cooling is mainly used for four-axis spindles at normal machining volumes and primarily for processing panel material up to 19 mm.

#### Benefit:

- Closed cooling system protects against the ingress of dust particles
- Easier to service thanks to lower coolant quantity (approx. 7 liters of coolant in the storage tank)
- Flow monitor ensures even distribution of the coolant



### Barcode reading system gun

With our barcode reading system you can transmit information about the process to the machine quickly and precisely without any additional manual intervention.

#### How you benefit:

- Convenient transfer of information
- No errors thanks to unique part identification
- Precise



### Optimized availability thanks to an active spindle cooling

With a modernization, you increase both availability and the service life of the spindle. Active spindle cooling is mainly used for five-axis spindles and for increased machining volumes and primarily for processing solid wood.

#### Benefits additional to those of passive spindle cooling:

- Can also be used at higher ambient temperatures
- Air-conditioning compressor that precisely regulates the preset temperature



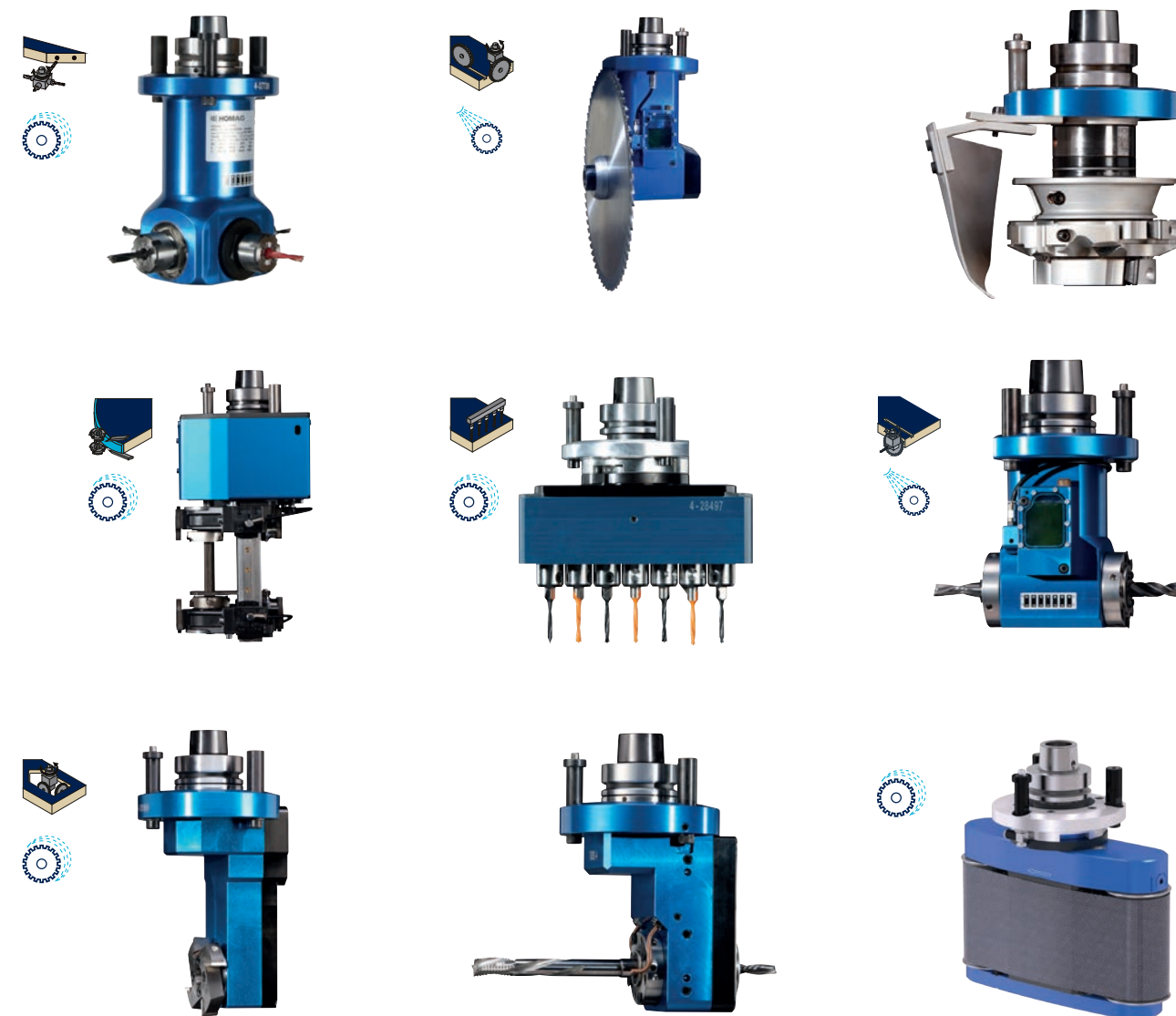
→ Also available as a hands-free version.





## Units

The unit interfaces at HOMAG are ahead of their time. They contain patented technologies that can be used to expand the range of tasks that your system can carry out at any time. In conjunction with the HOMAG unit technology, this opens up almost unlimited production possibilities for you.



A wide range of units is available to complement your machine.

For a comprehensive selection, it is worth taking a look at our unit and clamping equipment catalog.

**MORE AT HOMAG.COM**



Unit and clamping  
equipment catalog







## LIFE CYCLE SERVICES

Improved performance, more efficient processes, faster help, assurance of availability and smarter working.

### TEAM & COVERAGE

Largest global service network in the industry with over 1,350 personnel.

### INSTALLATION & COMMISSIONING

For a smooth start, we only let proven experts manage your setup.

### OPERATION & CONTROL

After teaching your personnel the intuitive control system, our clever apps help to make the operator's life much easier.

### MAINTENANCE & SERVICING

To keep things running, we're happy to take a preventative approach. You decide how often and how intensively you want the support to be. As we all know, prevention is better than the cure.

### eSHOP & ONLINE ADVANTAGE

A few clicks and it's fixed. Receive exclusive advantages by ordering spare parts online, depending on market availability. [shop.homag.com](https://shop.homag.com)

### HOTLINE & READINESS

When there's an emergency, we're here. Direct by phone, digitally via app or video, or with on-site support. We are close to you with over 90 regional service organizations worldwide. With more than 35,000 spare parts immediately available, we can deliver 85% of your orders fast.

### TRAINING & EDUCATION

With classroom, live online or eLearning training, we offer flexible options to help you get knowledge. We conduct over 4,000 customer training courses every year, and we even have our own training centers in 19 countries

### MODERNIZATION & IMPROVEMENT

Our modernization program is tailored to your machines and processes. We can evaluate your data and situation and advise you on the next step.

### ANALYSIS & SUSTAINABILITY

On request, we analyze all your processes with proven tools and procedures (LeanSixSigma). We have a large, certified team of experts for this purpose.

### FINANCING & CONSULTING

We offer you tailor-made financing concepts worldwide. With more than 60 years of experience and a close partner network of prominent banks and insurance companies to help us to find the right solution for you, we're always transparent and reliable in processing.

### Fast support:

94% resolution rate via our hotline

### Close to you:

1,350 service experts worldwide

### We get things moving:

Over 1,000 worldwide spare parts shipments each day

### No one else has that:

Electronic documentation on over 150,000 machines, available in 28 languages





**HOMAG Group AG**

info@homag.com  
homag.com

**YOUR SOLUTION**