

STORETEQ P-300/P-500

Growing **together.**

The all-in-one solution for your storage system.

Building living spaces.

From furniture to homes: The future is built with wood.

Together, HOMAG, WEINMANN, SYSTEM TM and KALLESOE provide comprehensive production solutions for manufacturers of optimized timber, engineered wood, timber construction, interior fittings, furniture and more. With over 500 years of combined experience in machinery engineering, automation systems, and software technology, our focus is on building strong partnerships that enhance your productivity, precision, and profitability.

This is how we are Building living spaces. Together, with you.

HOMAG – YOUR SOLUTION





Extensive experience:
> 40 years
of our storage system

Proven technology:
> 1600
HOMAG storage
systems worldwide

Unbeatable combination:
> 100
systems sold with saw
and/or nesting

The right selection:
9
product series for wood-
working shops and industry

Unlock more potential from your processing machines

From a woodworking shop that uses a storage area the size of a double garage, to a furniture manufacturer who produces on an industrial scale and operates a storage system to maximum dimensions – storage systems solve the logistical requirements at the beginning of the process chain. Whether used in combination with one or more processing machines or as a stand-alone picking storage system, our storage systems increase production capacity, reduce personnel requirements and quality costs and enable orders to be processed more flexibly, faster and more economically.

YOUR SOLUTION

MORE: HOMAG.COM



STORETEQ P-300 / P-500



STORETEQ P-3x0 / P-5x0

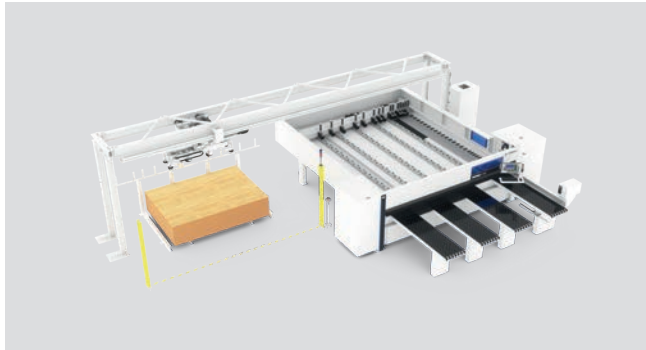
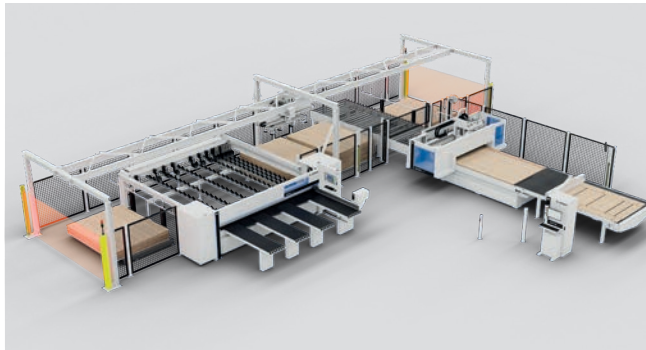
CONTENTS

06	Solutions for your material management
08	STORETEQ P-300/P-500
10	Intelligent suction traverses
12	STORETEQ P-500 twin/P-500 dual
14	STORETEQ P-310/P-510/P-320/P-520
18	woodStore storage management system
22	Solutions
24	Technical data
26	Life Cycle Services

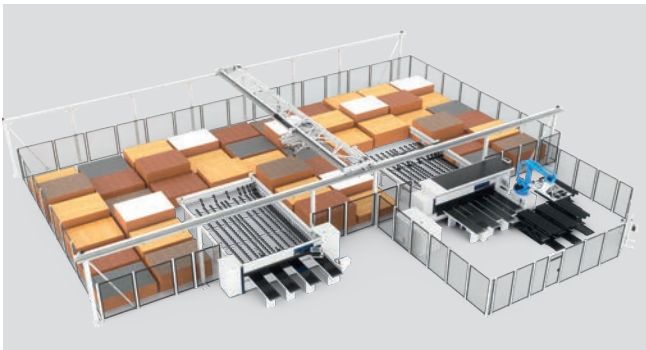
Growing together – the all-in-one solution for your material management

Intelligent solutions from entry level to industry

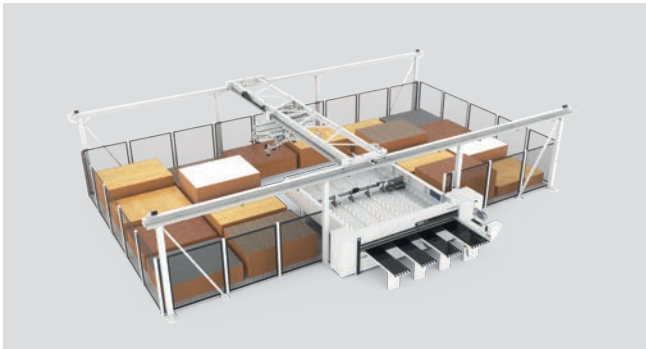
Whether it's a large range of parts, high speeds or minimal space requirements: **The HOMAG STORETEQ portfolio** combines the strengths of automation with intelligent logistics – from a single-axis feeder, through the storage system, storage systems with two bridges up to second-level and double-level storage systems. This results in noticeable optimization effects in reliable panel handling, intuitive operation and higher material utilization while simultaneously improving sustainability - all made possible by the consistent use of the **woodStore 8 storage software**.



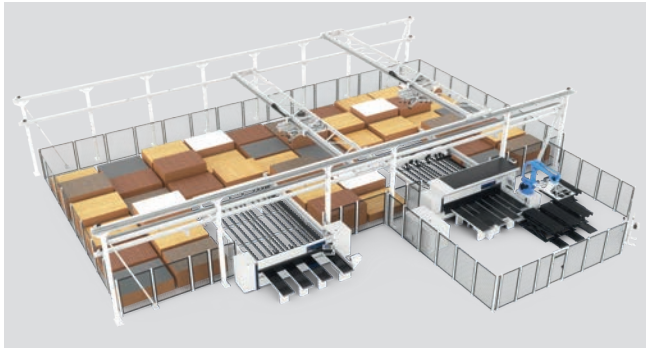
STORETEQ F-100
For more information, see the "STORETEQ F-100" brochure.



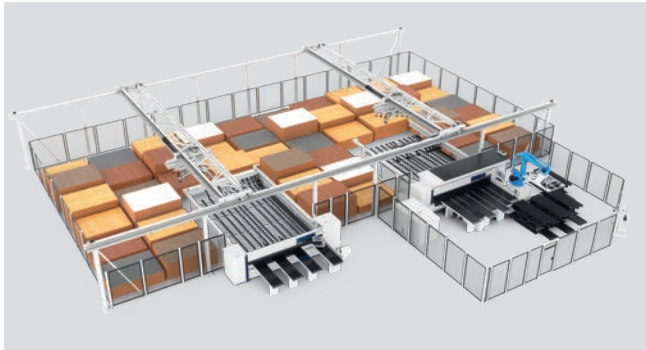
STORETEQ P-500



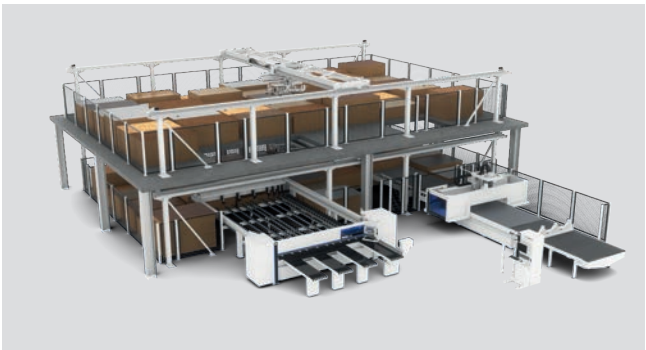
STORETEQ P-300



P-500 DUAL



P-500 TWIN



STORETEQ P-320/P-520



STORETEQ P-310/P-510

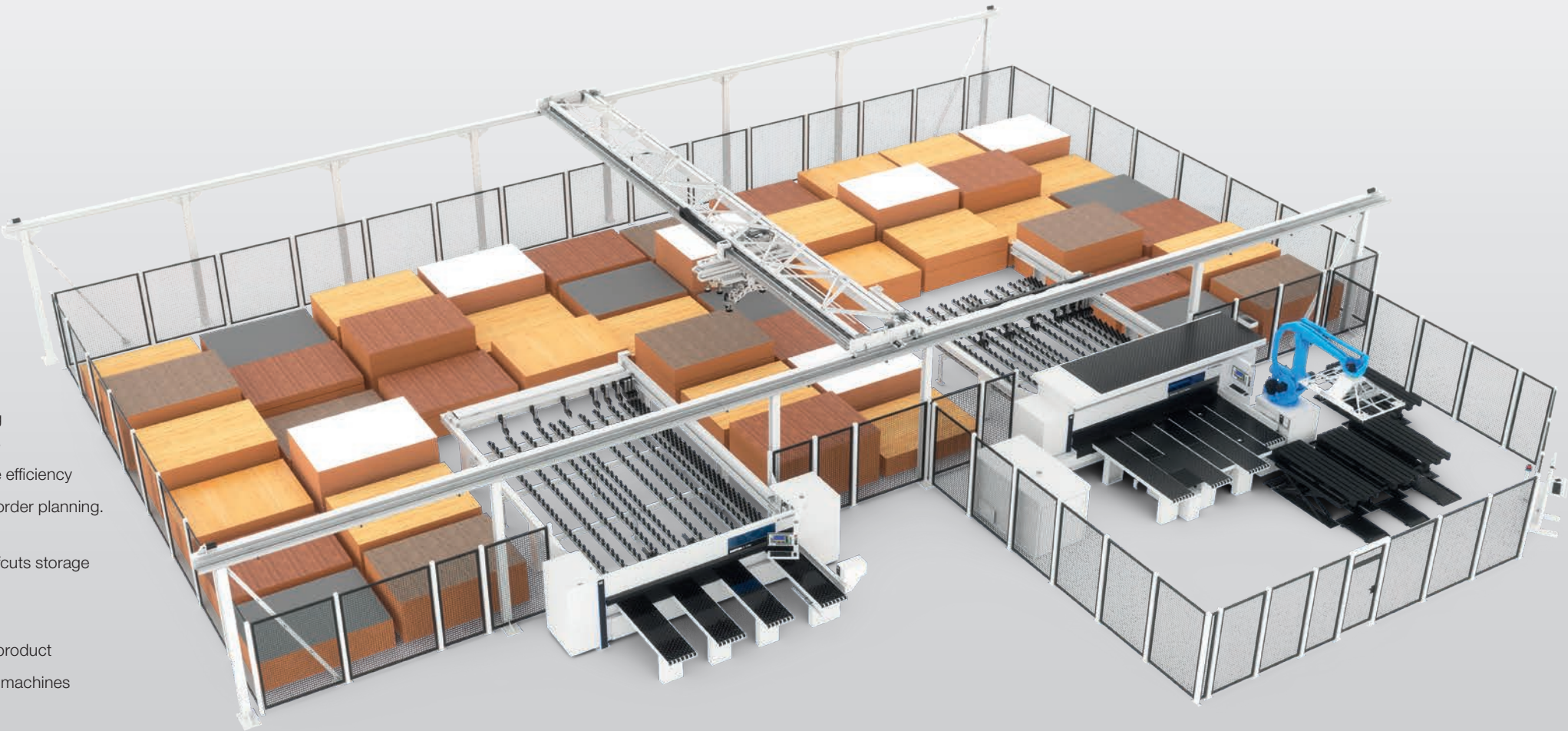
Consistent use of the woodStore 8 storage software with the same data basis

STORETEQ P-300/P-500

Smart feeding together – the all-in-one solution for your storage management

The advantages at a glance

- **Efficient material flow:** Safe panel transport without unnecessary travel paths and gentle handling without searching for panels saves time and space — even when handling a wide range of materials
- **Fast delivery times:** Timely material procurement and provision and optimized processes increase efficiency
- **Optimized material handling:** Material consumption is coordinated with order management and order planning. Only the quantities needed for the foreseeable future are stored
- **Sustainable material management:** Offcuts are organized and automatically managed via the offcuts storage area or are returned to the storage system
- **Personnel resource savings:** Cutting and material provision are separated from one another
- **High quality assurance:** Suppliers and incoming goods can be uniquely allocated to the finished product
- **Minimal idle time:** Cutting optimization only includes available material in its plans and processing machines are fully utilized
- **Easy management of exotic materials:** Management of the entire material – even when it is not in the storage system
- **Gentle panel handling:** Reliable panel separation and safe handling using a vacuum on the suction traverse
- **Intuitive operation:** Intelligent operating and analysis functions and proactive support thanks to setting recommendations



NEW Optimized storage capacity

Placing **stacks between the storage system feet** provides an effective way to increase storage capacity. Depending on the panel sizes, the suction traverse used, the stack orientation and the available space, this may allow additional storage positions to be created in the same room. This efficient use of available space not only improves storage utilization, but also increases productivity.



Processing **machines are connected via** standardized interfaces. Regardless of whether you're placing a panel directly on the saw or connecting a processing machine to the storage system using a roller conveyor, the STORETEQ P-300/P- 500 ensures the connected machines add value optimally.



Wide variety of materials

Whether plastic, plexiglas or laminates, coated or uncoated panels. The STORETEQ P-300/P-500 is a true all-rounder when it comes to panel handling as well.

- Panel weights up to **350 kg** and panel lengths up to **5600 mm**
- Smooth transport of even textured surfaces
- High double scissor stability for precise panel handling
- Handling plastic panels



STORETEQ P-510/P-520 — flexibility and range of materials combined into one storage system

The STORETEQ P-500 allows even greater flexibility in length and width.

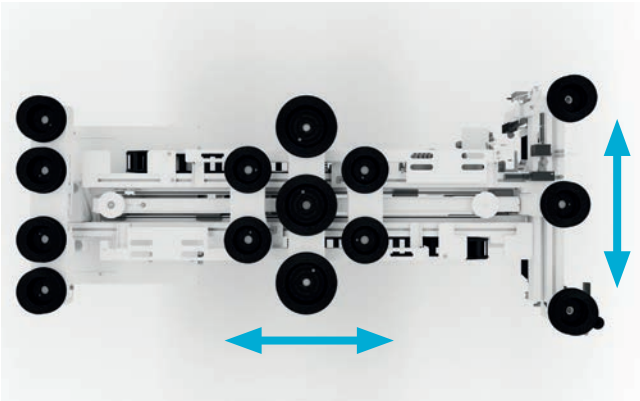
- Span widths of up to **16 m** and travel path lengths of up to **100 m**
- Controlled, low-vibration movements, even in the largest version

Intelligent suction traverses for maximum efficiency in the storage system

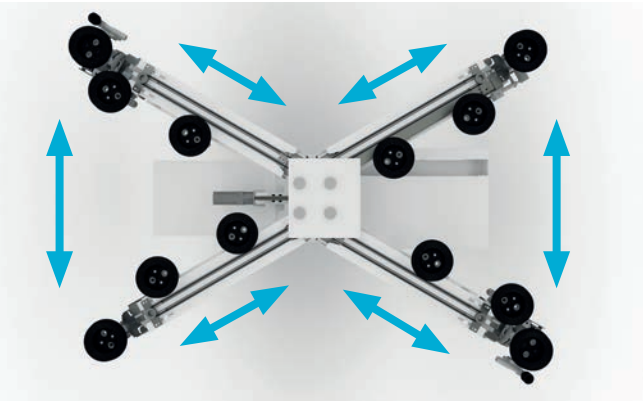
As standard, HOMAG offers two suction traverse variants for storage systems, each of which is tailored to the different requirements of modern production processes.

Each suction traverse features integrated weight control, panel correction and efficient vacuum generation, ensuring precise, safe and efficient material handling and a high-quality and accurate production process.

- **Weight check:** When the panel is lifted, the panel weight is compared with the weight stored in the master data. This ensures that only one panel is lifted at a time.
- **Panel correction:** Determines the exact position of the panel on the suction traverse and thus enables clean and correct placement on the panel stack.
- **Efficient vacuum generation:** Resource-efficient use of compressed air based on the Venturi principle for minimum energy consumption.



ST61 T suction traverse – for precise, reliable panel handling
The ST61 T suction traverse is characterized by motorized size adjustment in width (one-sided) and length as well as suction positions in two panel corners.



ST71 X suction traverse – for maximum flexibility and efficiency
The ST71 X suction traverse rail has motorized size adjustment in all four directions and suction positions in four panel corners. This also allows special materials, such as plastic or laminate, to be handled with ease.

NEW: Dynamic rotation ranges for maximum performance
Varying material sizes and suction traverse dimensions require flexible solutions – this is precisely where the dynamic rotation ranges come into play. The suction traverse measure the panels when they are attached and then adjust the turning circle according to their size. This improves the dynamic behavior of the overall machine processes, which leads to shorter cycle times and optimized storage efficiency, especially for small panel sizes.

NEW: Weight-dependent acceleration ramp for rotary and travel drive
The weight-dependent acceleration ramp is an intelligent solution which, through focusing on speed and service life, results in optimum movement processing. The technology achieves efficiency gains by individually adapting acceleration and deceleration to the relevant workpiece and its dimensions. The result: Significantly higher acceleration is achieved for lightweight workpieces, which increases the process speed and reduces the cycle time per movement. At the same time, acceleration of heavy workpieces is specifically reduced - this protects the drive and the bearing from unnecessary wear and extends the service life of the entire system.



Gentle panel handling with the self-learning suction traverses

Both suction traverse variants are equipped with intelligent, self-learning technology. They independently generate the optimal vacuum parameters for panel separation, based on only two panel properties to be specified by the operator: **surface** (coated or porous) and **stiffness** (flexible or non-flexible).

Based on this information, the suction traverse develop a strategy for separating parts, which is checked and independently optimized with each separating cycle. The result is reliable processes that meet the requirements of modern production processes.



STORETEQ P-500 twin / P-500 dual

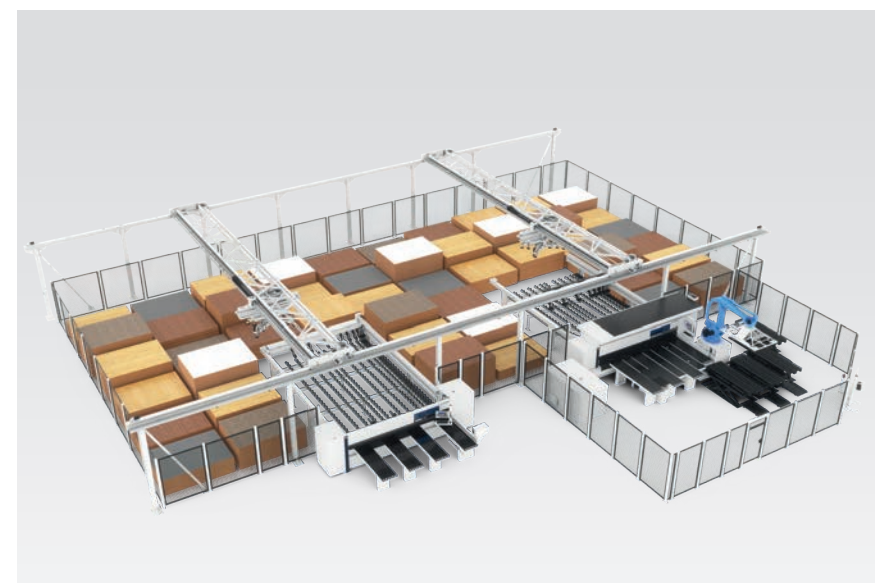
Increasing efficiency together – the all-in-one solution for your storage or material management

A high level of possibilities when combining with processing machines and strong capabilities for a variety of panel materials makes the STORETEQ P-500 twin or P-500 dual the all-rounder among the storage systems. This storage system provides highly efficient logistics for industrial applications and woodworking shops.

STORETEQ P-500 TWIN

With two bridges next to each other, the STORETEQ P-500 twin brings even more capacity for your production.

- Fast storage and removal from storage as well as increased sorting capacity shorten feed and delivery times
- Simultaneous feeding of machines
- Smooth and reliable control via the woodStore 8 storage software



STORETEQ P-500 DUAL

With two bridges arranged one above the other, the STORETEQ P-500 dual is able to access each storage position, infeed position, outfeed position and processing machine with both suction traverses. This increases storage capacity by almost 100%.

- Even greater flexibility
- Maximum performance with minimal space requirements



This technology is only available from us!

STORETEQ P-310/P-510

STORETEQ P-320/P-520

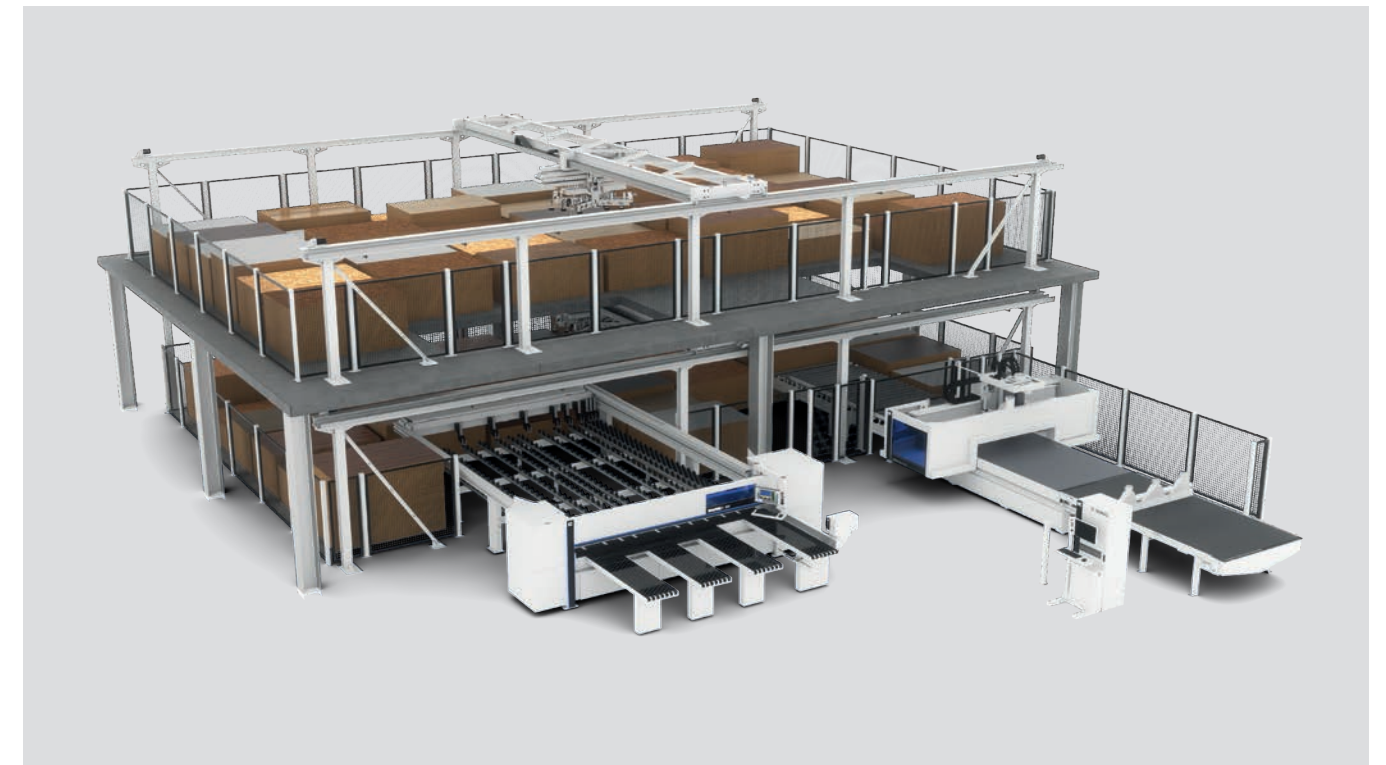
Saving space together – the all-in-one solution for your storage or material management

The storage system STORETEQ P-310 / P-510 and STORETEQ P-320 / P-520 offers the efficient solution for increased storage capacity in limited space. Instead of building new production halls, the existing hall height is converted into new storage areas in an optimal and resource-saving way.



"This automatic storage system allows us to save time, which is an important competitive advantage. The search time, quality and speed have become noticeably improved. In particular, the material overview, offcuts management and the more structured processes have already paid off many times over."

Mario Beck — owner, Tischlerei Mario Beck carpentry business



"No one is as conscientious, tenacious and fast as our storage system. The investment is pays for itself. Business is running smoothly and is much more predictable, even for snapshots. This frees up two employees that we urgently need elsewhere. The storage system also recognizes slow-moving goods and makes suggestions about how to use them."

Josef Eibl — owner, Josef Eibl GmbH

STORETEQ P-310/P-510 STORETEQ P-320/P-520

Second level panel storage – essential components of your storage solution

When it comes to storing panels on the second level, certain components are essential to ensure safe, material-friendly and efficient operation. HOMAG storage solutions deliver the perfect answer: Their focus is on long-lasting, robust designs and space efficiency with the highest safety standards.



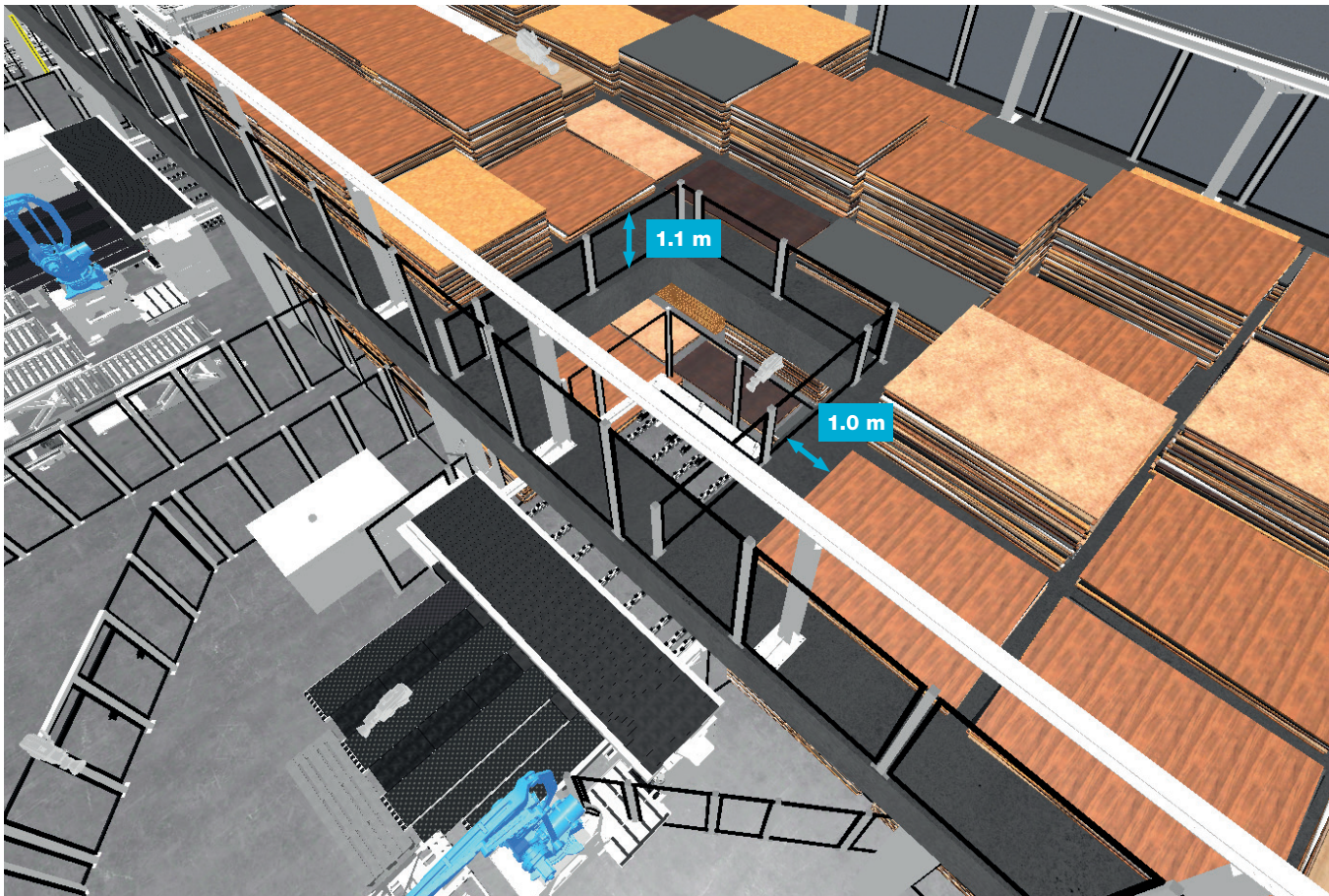
Structural steel including staircase

Robust structural steel forms the foundation of the second level. Stability and safety are of the utmost importance here, while at the same time optimizing weight and costs. The integrated staircase also allows convenient and easy access to the storage area on the second level.



Double scissor lift

The double scissor lift with a nominal height of 5000 mm enables the efficient use of the second level along with safe and gentle panel transport. The typical stack height on the upper level is 1200 mm. If robot saws are positioned fully underneath the second level, the maximum possible stack height is slightly reduced.



Storage infeed positions raised or on second level

The layout of the storage infeed position is flexible: Either on the second level or raised on the lower level – adapted to the specific requirements. Depending on the ceiling height of the second level and the required storage capacity, the storage infeed position can optionally be integrated on the lower level without raising it.

Opening protection – safe and CE-compliant

To secure the storage and retrieval openings on the second level, HOMAG offers various solutions that meet individual requirements for safety and efficiency while meeting the highest CE standards.

Opening protection of the second level:

- **Secured via railing and stack clearance to opening:** A circumferential railing with a height of 1.1 m combined with a stack clearance of 1.0 m to the opening creates a simple, reliable and cost-effective solution which allows employees to move freely and safely around the second level.
- Alternatively, the second level can be secured using **horizontal inserts**. These close the openings automatically if necessary. This eliminates both the railing and the minimum distance to the stack.

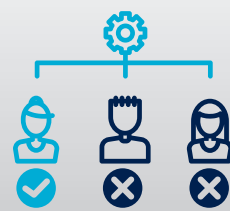
Uncompromising safety:

All solutions meet the requirements of the Machinery Directive 2006/42/EC and the trade association for wood and metal. HOMAG always observes all relevant and necessary safety measures based on the current state of the art. Thus, the focus of risk assessment is consistently on occupational safety for companies and employees.

woodStore⁸

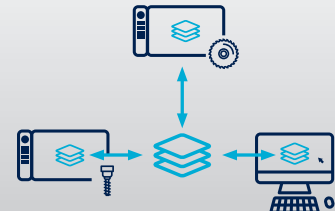
Smart storage software. Intelligent panel management.

What makes woodStore a leading storage control system?



User management

Person-controlled storage operation with up to 40 different user rights and an unlimited number of user interfaces – at the saw, nesting machine or in the office.



Multiterminal interface

An unlimited number of user interfaces creates full transparency and optimal work processes. Whether on the saw, the nesting machine or in the office, the storage interface is completely accessible at all times and can be used in parallel depending on the access rights.



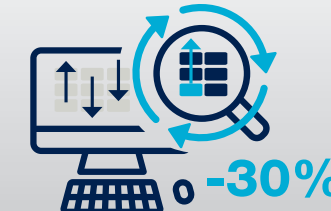
quickTip

Proactive setting recommendations, centrally in one place in woodStore, lead to optimal storage management and smooth processes.



Flexible storage organization

Flexible and customer-specific assignment and division of panels and storage positions into meaningful groups, including selection of the storage strategy. This means that the storage system adapts optimally to individual requirements while making maximum use of the storage capacity.



IntelliStore

Permanent monitoring of all storage movements and automatic adaptation to current production conditions.



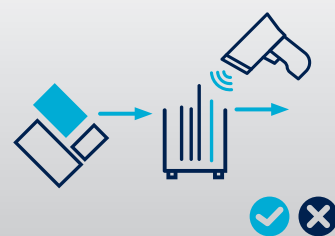
woodStore Analyzer

In a period that can be specifically defined, the main functions of the storage system are examined and analyzed according to the customer's requirements in order to determine whether the storage system is being used optimally and efficiently.



Management of external storage

Central management of cantilever racks (block storage, external storage) in realistic 3D view including forklift operator management.



Scrap management

Automatic storage of offcuts from the saw and/or nesting with integrated measurement of the panels during the material intake process and management of manual offcuts in an external offcuts storage.



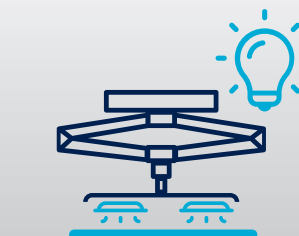
IntelliStore AI — offcuts

Automatic storage of offcuts on defined stacks of panels distributed across the storage system optimizes the use of space and reduces storage movements by up to 40%.



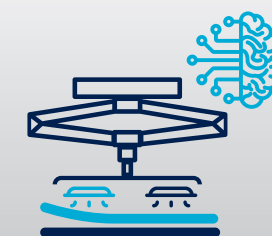
FlexSortPlus pre-sorting

Advance removal from storage everywhere in the storage system, e.g. at storage return positions and storage positions that are not required, and automatic generation of advance removal from storage orders from ongoing production or the program sequence of the processing machine improve the storage organization and efficiency.



Intelligent vacuum management

The cross rail measures the parts in three axes with every movement and generates the data required for panel handling by defining only two panel properties (surface and rigidity) – this ensures dependable process reliability.



Smart Separation Learning

Fully automatic panel separation that requires only two panel handling settings.

WOODSTORE — SOFTWARE MODULE FOR STORETEQ	F-100	P-3X0	P-5X0
Smart Connected System	✓	✓	✓
Database SQL Server	✓	✓	✓
Multiterminal interface	✓	✓	✓
Manual offcuts management	+	✓	✓
Automatic offcuts management optionally with intelliStore AI — Offcuts	—	+	+
Management of external storage	+	✓	✓
Forklift operator management	+	✓	✓
Flexible storage organization	—	✓	✓
intelliStore optimization module	—	✓	✓
FlexSortPlus pre-sorting	—	✓	✓
woodStore Analyzer	—	✓	✓
Other intelligent storage functions	—	+	+
Storage strategies	—	✓	✓
Import and export of stack information	+	✓	✓
Panel allocation	✓	✓	✓
ERP/PPS integration	✓	✓	✓
High-performance intermediate buffers	—	✓	✓
Lifting table management	—	+	+
Headcut module	—	+	+
Rainbow pattern	—	✓	✓
Integrated image database	✓	✓	✓
Connection of processing machines	—	+	+
Stabilization function	—	✓	✓
Database access analysis	✓	✓	✓
Email notification	+	+	+
Intelligent vacuum management	—	✓	✓
Smart Separation Learning	—	✓	✓

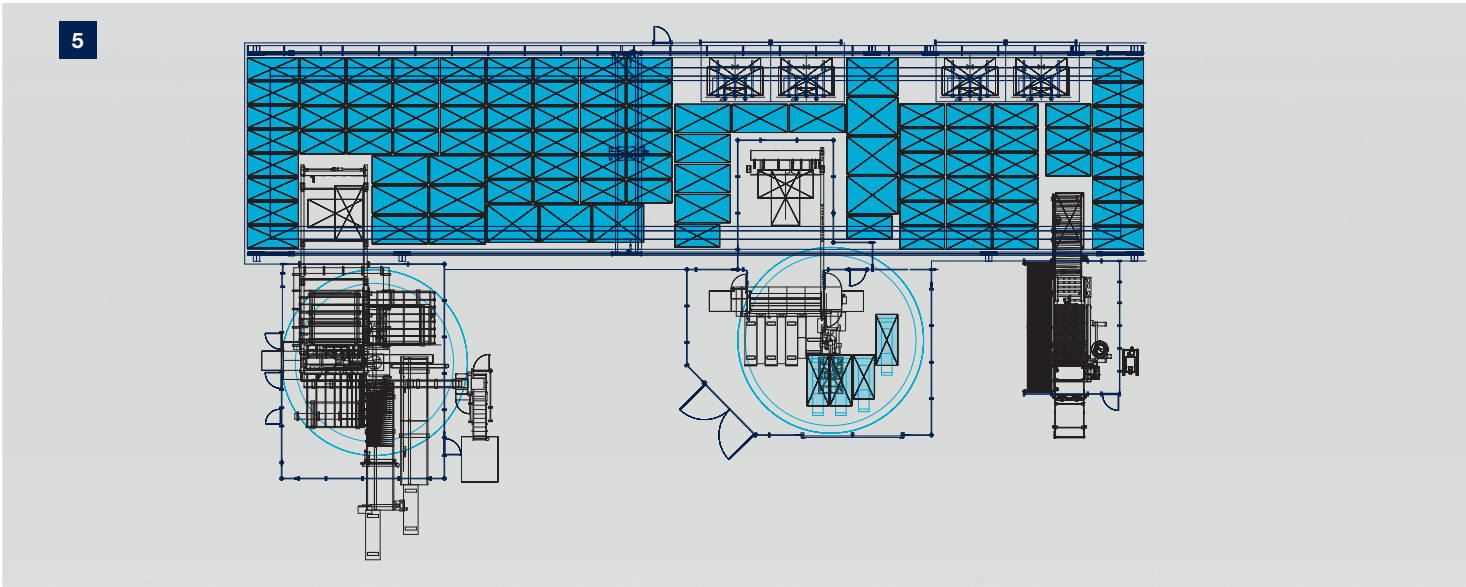
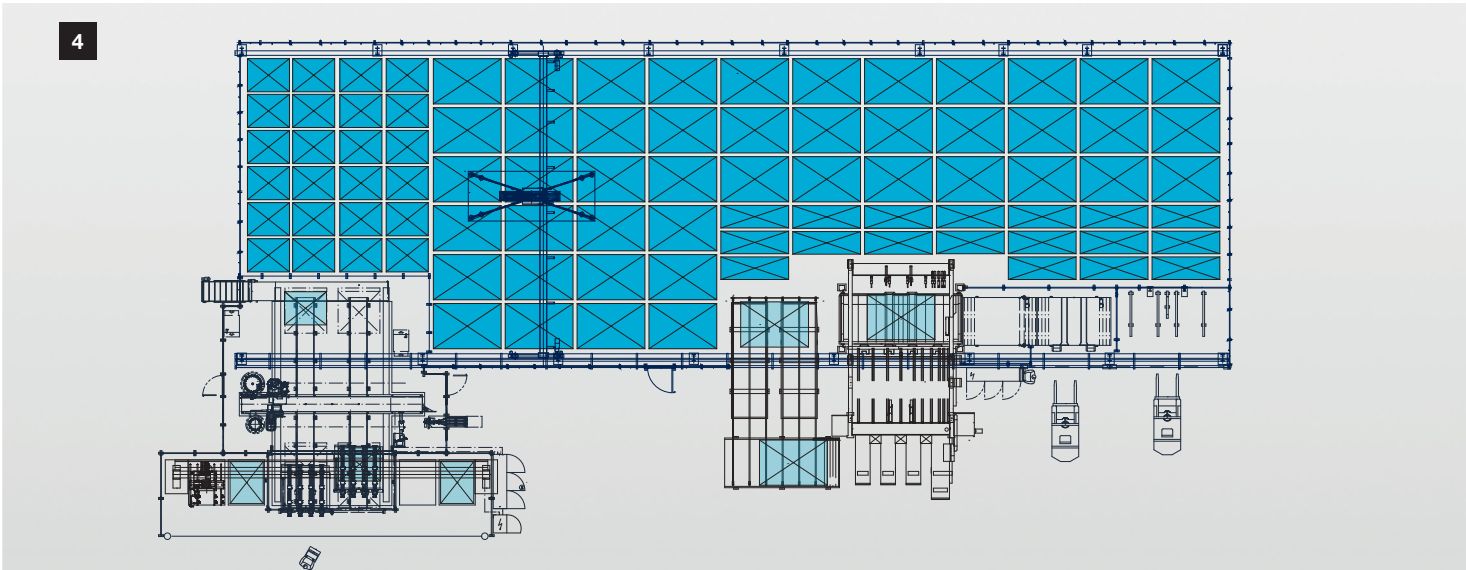
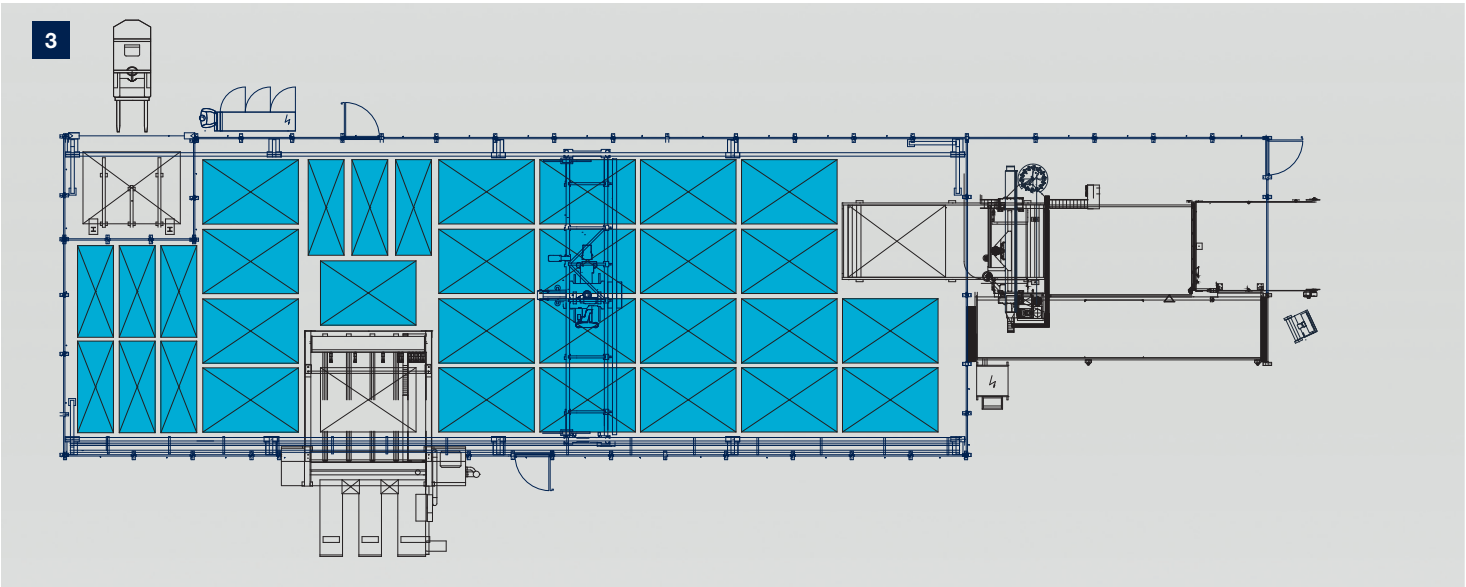
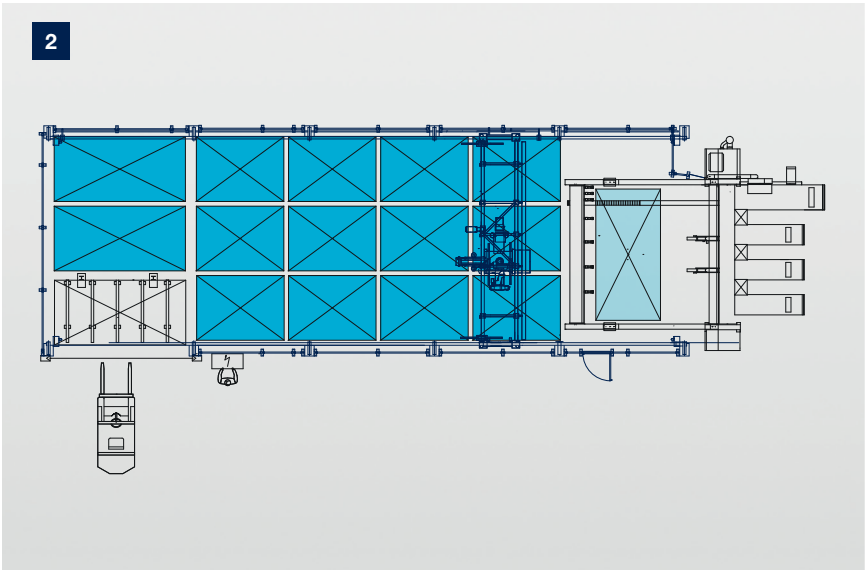
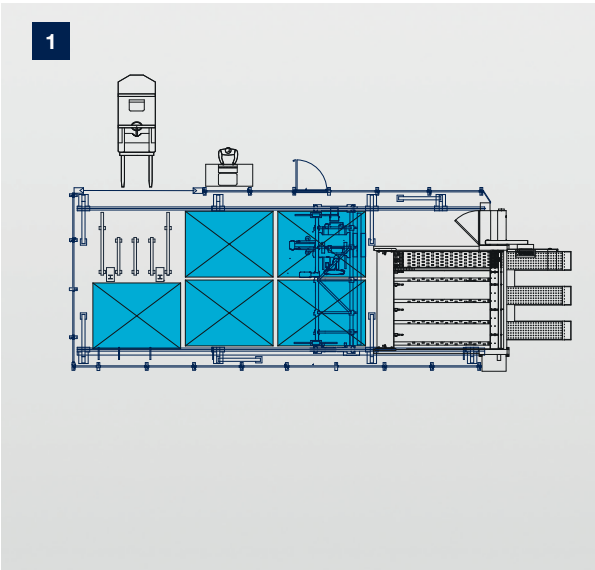
WOODSTORE — SOFTWARE MODULE FOR STORETEQ	F-100	P-300	P-500
Integrated quickTip assistance function	—	✓	✓
Easy2Work package	✓	✓	✓
Production list module	✓	✓	✓
Master data maintenance/management	✓	✓	✓
Backup system	✓	✓	✓
Report generator	✓	✓	+
User management	✓	✓	✓
Mobile operation	—	+	+
Cloud-ready	✓	✓	✓

LEGEND	
Standard	✓
Optional	+
Not available	—



Intelligent logistics are one of the keys to success

HOMAG storage systems are intelligent all-rounders that meet all your needs. From the smallest storage "that would fit into a double garage" to the multi-story storage that would meet industrial requirements. Across all levels of production, the flow of material is optimized, stocks are managed transparently and processing machines are used in an optimal way.



1 Storage system and saw with 5 stacking positions
Users include those working in traditional joinery

2 Storage system and saw with 14 stacking positions
Users include fitters

3 Storage system with saw and CNC processing with more than 20 stacking positions
Users include those working in trade fair and shop construction, suppliers

4 Storage system with saw and processing center with more than 30 stacking positions
Users include kitchen and furniture manufacturers working on an industrial scale

5 Storage system with saw, nesting and CNC processing with more than 50 stacking positions
Users include kitchen and furniture manufacturers working on an industrial scale



STORETEQ STORAGE SYSTEM	Basic machine	With optional extras
Span width (mm) P-300	5000	12000
Span width (mm) P-500	5000	16000
Frame length (mm) P-300	10000	50000
Frame length (mm) P-500	10000	100000
Speed		
Bridge (m/min.)	60	130
Carriage (m/min.)	80	120
Lift drive (m/min.)	30	45 without double scissor lift mechanism 65 with double scissor lift mechanism
Workpiece length (mm)	2000–4200	max. 5600
Workpiece width (mm)	800–2200	min. 400
Workpiece thickness, unprocessed panels (mm)	6 and higher	
Workpiece thickness, MDF (mm)	3 and higher	
Workpiece thickness, coated panels (mm)	0.8 and higher	
Workpiece weight (kg)	250	350
Stack height (mm)	2100	2500
Stack height (mm) upper level	1200 (optional 2000, dependent on configuration)	

VALYOU

Our Mission, Your Performance.

HOMAG STORETEQ P-300 / P-500 | Life Cycle Services

Fast support:

94% resolution rate
via our hotline

Close to you:

1,350 service experts worldwide

We get things moving:

Over 1,000 worldwide spare parts
shipments each day

No one else has that:

Electronic documentation on over
150,000 machines, available in 28
languages

LIFE CYCLE SERVICES

Improved performance, more efficient processes, faster help, assurance of availability and smarter working

TEAM & COVERAGE

Largest global service network in the
industry with over 1,350 personnel.

INSTALLATION & COMMISSIONING

For a smooth start, we only let proven
experts manage your setup.

OPERATION & CONTROL

After teaching your personnel the
intuitive control system, our clever
apps help to make the operator's life
much easier.

MAINTENANCE & SERVICING

To keep things running, we're happy
to take a preventative approach. You
decide how often and how intensively
you want the support to be. As we all
know, prevention is better than the
cure.

eSHOP & ONLINE ADVANTAGE

A few clicks and it's fixed. Receive
exclusive advantages by ordering
spare parts online, depending on
market availability. shop.homag.com

HOTLINE & READINESS

When there's an emergency, we're
here. Direct by phone, digitally via app
or video, or with on-site support. We
are close to you with over 90 regional
service organizations worldwide.
With more than 35,000 spare parts
immediately available, we can deliver
85% of your orders fast.

TRAINING & EDUCATION

With classroom, live online or
eLearning training, we offer flexible
options to help you get knowledge.
We conduct over 4,000 customer
training courses every year, and we
even have our own training centers in
19 countries

MODERNIZATION & IMPROVEMENT

Our modernization program is tailored
to your machines and processes. We
can evaluate your data and situation
and advise you on the next step.

ANALYSIS & SUSTAINABILITY

On request, we analyze all your
processes with proven tools and
procedures (LeanSixSigma). We have
a large, certified team of experts for
this purpose.

FINANCING & CONSULTING

We offer you tailor-made financing
concepts worldwide. With more than
60 years of experience and a close
partner network of prominent banks
and insurance companies to help us
to find the right solution for you, we're
always transparent and reliable in
processing.



HOMAG Group AG

info@homag.com
www.homag.com

YOUR SOLUTION