

# DRILLTEQ V-200

**Big can be that small.**

The flexible all-rounder for processing in just 5 m<sup>2</sup>.







# DRILLTEQ V-200 – big can be that small.

**Fast processing – saves time**

**Takes up little room – saves space**

**Simple operation – saves nerves**

**Great value for money – saves money**

Our CNC processing centers offer the technology of the future today. And with good reason: Tradition. For us, it is both a motivation and a commitment. Customers the world over associate the very highest standards with this. And we meet those expectations.

## YOUR SOLUTION

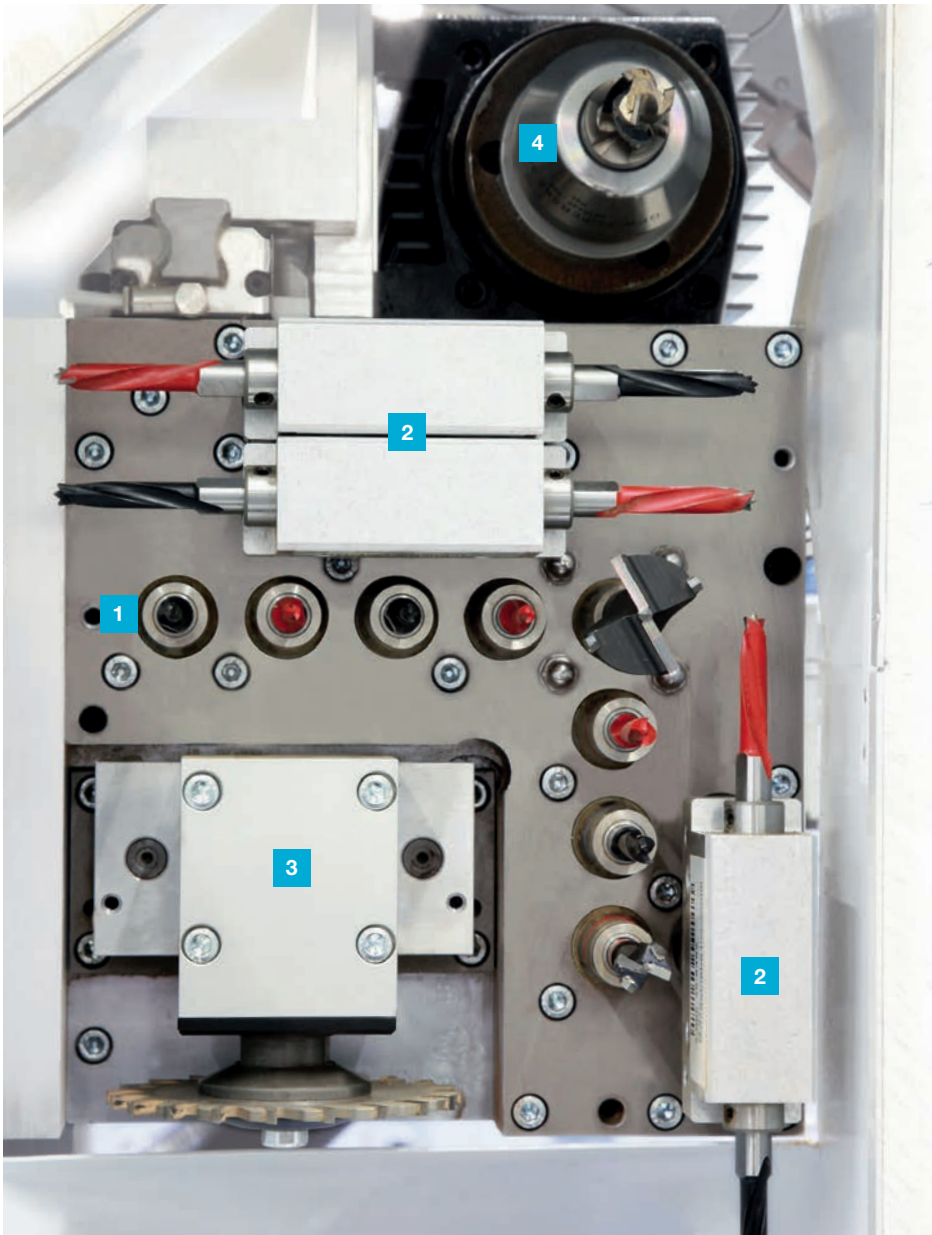
**MORE: [HOMAG.COM](https://www.homag.com)**



## CONTENTS

- 04 Configurations
- 06 All inclusive – Hardware
- 08 Option – Plausibility Check
- 09 Option – Length-dependent processing in X-direction
- 10 Options | Application examples | Everything at a glance
- 12 Option – Robot Connection
- 14 All inclusive – Software
- 15 Option – Software
- 16 Apps and digital assistants
- 18 Life Cycle Services
- 19 Technical Data

## Package 1



### 1 Vertical drilling

- 8 High-speed drilling spindles, incl. quick change drilling system

### 3 Grooving

- Grooving saw in X-direction, Ø 100 mm

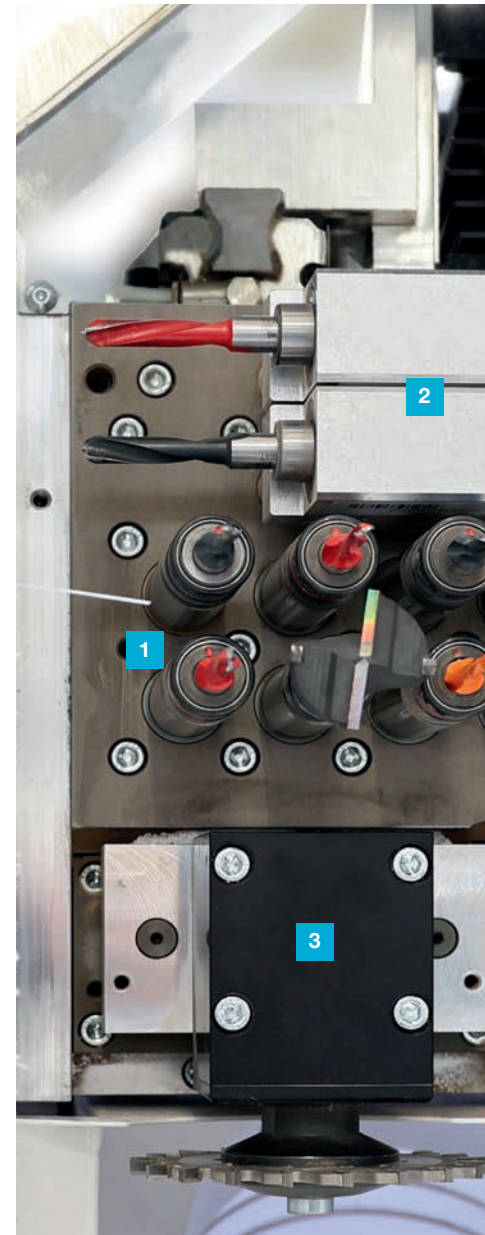
### 2 Horizontal drilling

- 4 High-speed drilling spindles in X-direction
- 2 High-speed drilling spindles in Y-direction

### 4 Routing

- Router motor with hydraulic quick-change system, 5 kW ETP 25

## Package 2



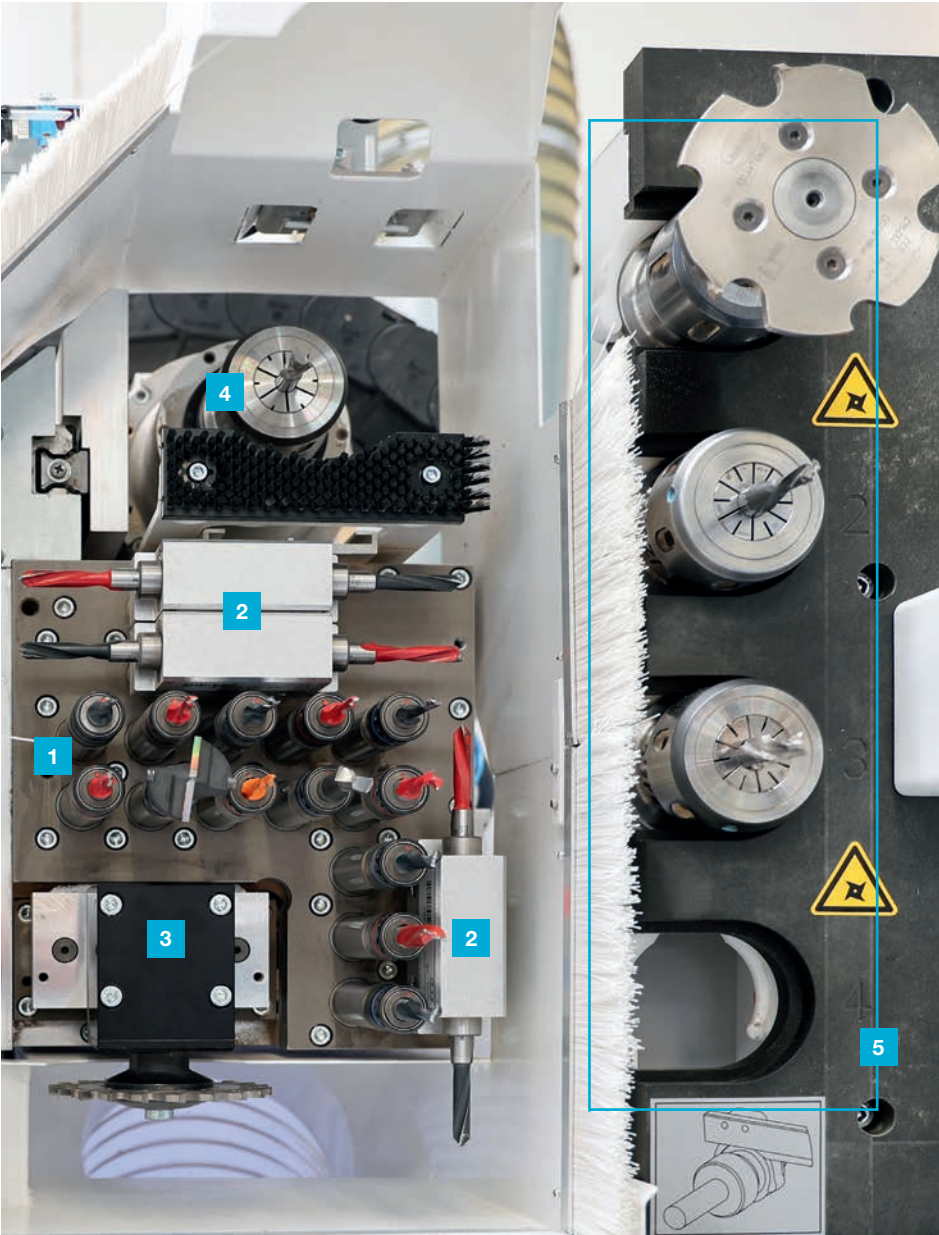
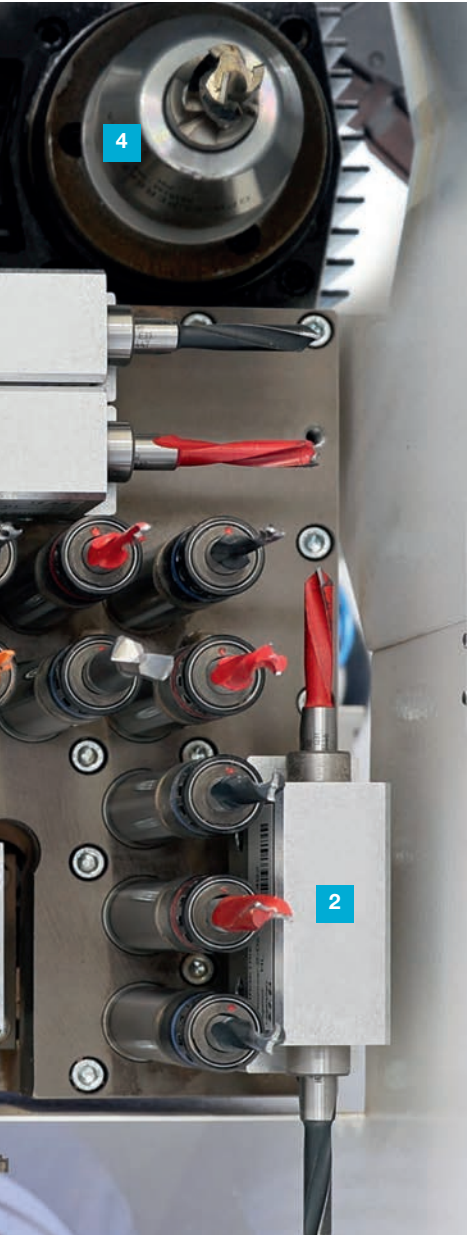
### 1 Vertical drilling

- 13 High-speed drilling spindles, incl. quick change drilling system

### 3 Grooving

- Grooving saw in X-direction, Ø 100 mm

# Package 3



- 2 Horizontal drilling**
  - 4 High-speed drilling spindles in X-direction
  - 2 High-speed drilling spindles in Y-direction

- 4 Routing**
  - Router motor with hydraulic quick-change system, 5 kW ETP 25

- 1 Vertical drilling**
  - 13 High-speed drilling spindles, incl. quick change drilling system

- 3 Grooving**
  - Grooving saw in X-direction, Ø 100 mm

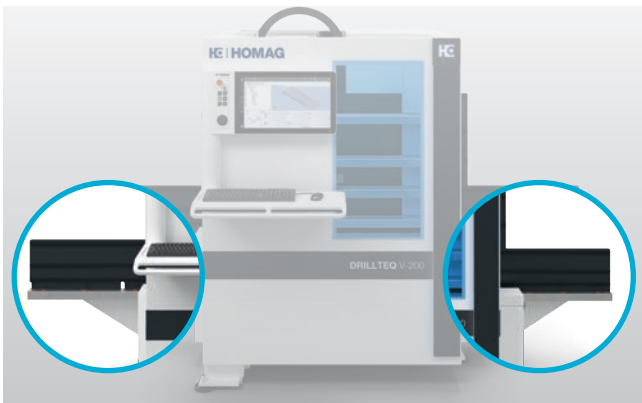
- 5 Tool changer**
  - Automatic tool change magazine with 4 places

- 2 Horizontal drilling**
  - 4 High-speed drilling spindles in X-direction
  - 2 High-speed drilling spindles in Y-direction

- 4 Routing**
  - Tool changing spindle 10 kW HSK 63

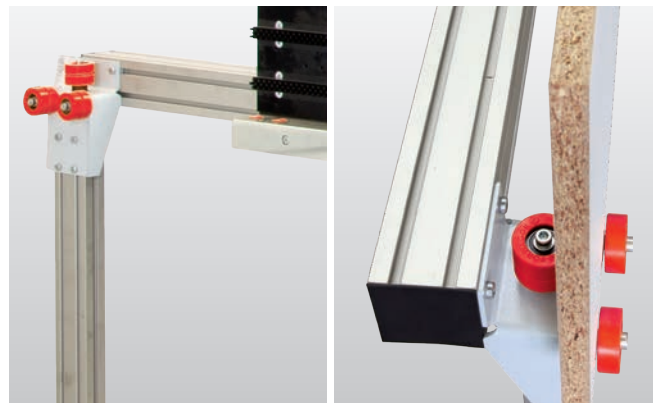
## All inclusive – Hardware

**TOP EQUIPMENT RIGHT FROM THE BEGINNING:** Already in the standard elementary technologies are included, which ensure sustainable highest processing quality.



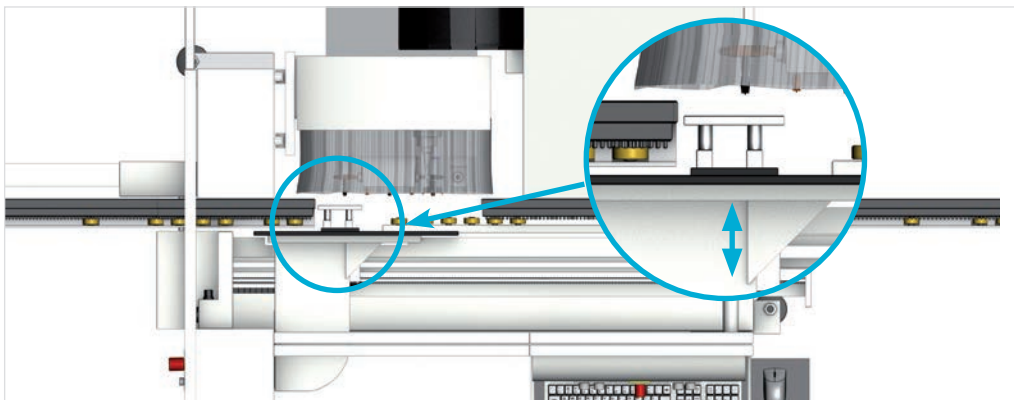
### Workpiece load- and workpiece removal area

- Mechanical support via roller conveyor in the loading- and removal area of the machine



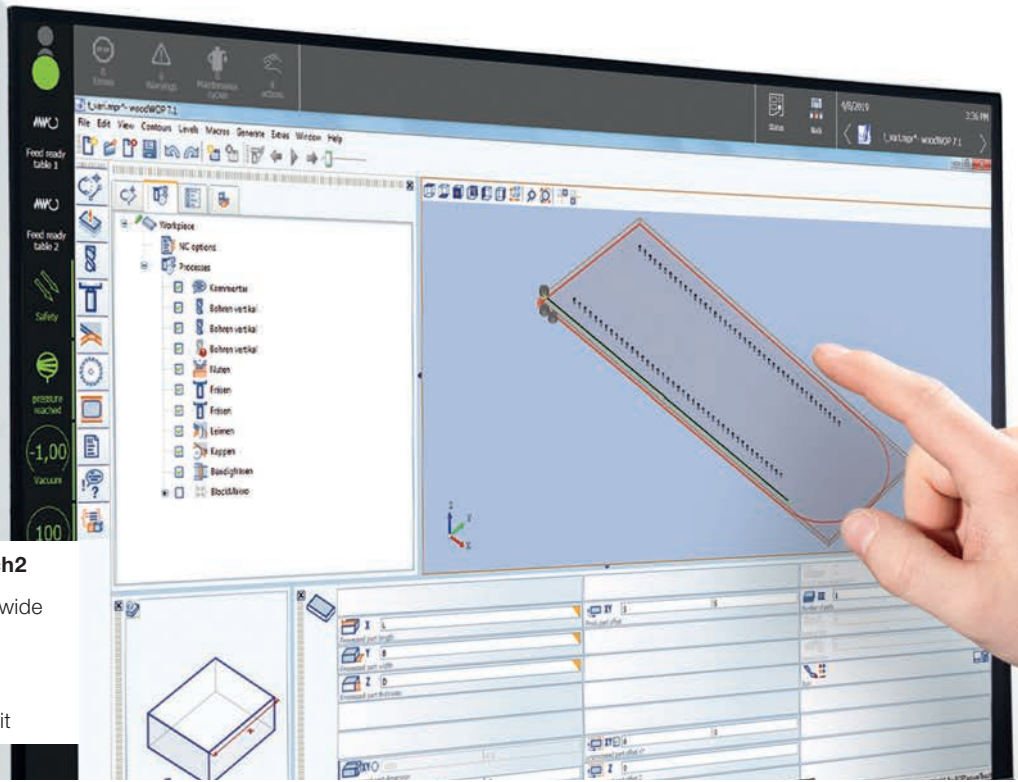
### Working length extension

- Extension of the working length from 2500 to 3050 mm incl. roller conveyor



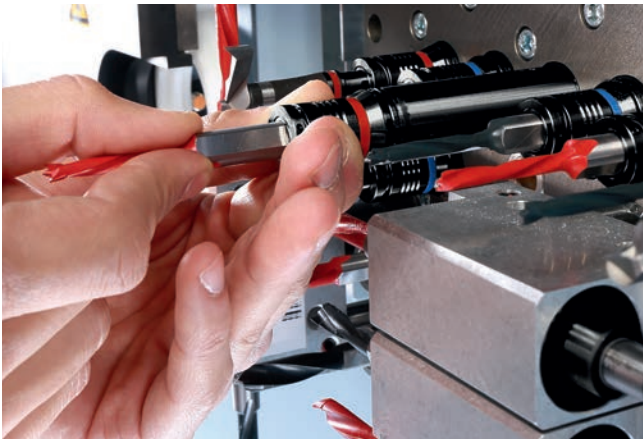
### Automatic workpiece thickness adjustment

- Automatic adjustment of the counter block to the material thickness according to the data preselected by the operator in woodWOP



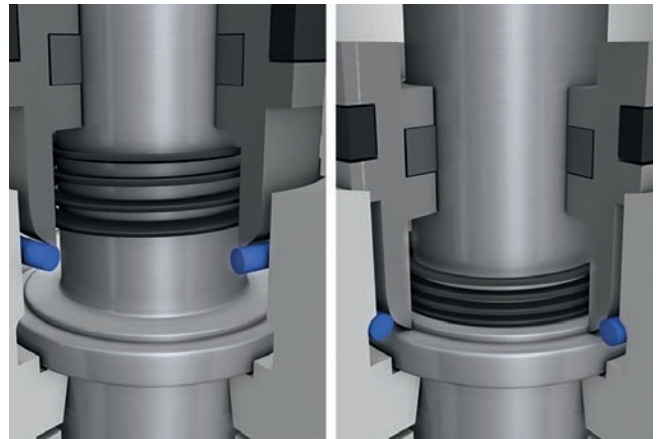
**powerControl with powerTouch2**

- Full-HD multitouch display with wide screen 16:9
- Front USB interface
- Ethernet connection 10/100 Mbit



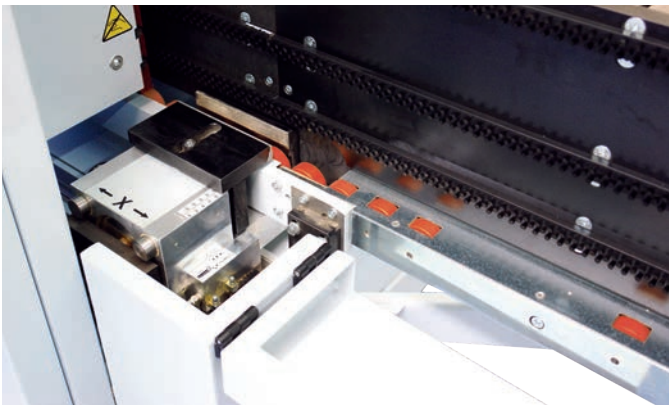
**Drill quick-change system**

- The patented system ensures easy installation or change of drilling bits. Your easy way to save time!



**Automatic spindle clamping**

- Patented system for exact drilling depth at any time with different materials
- Lasting assurance of drilling quality



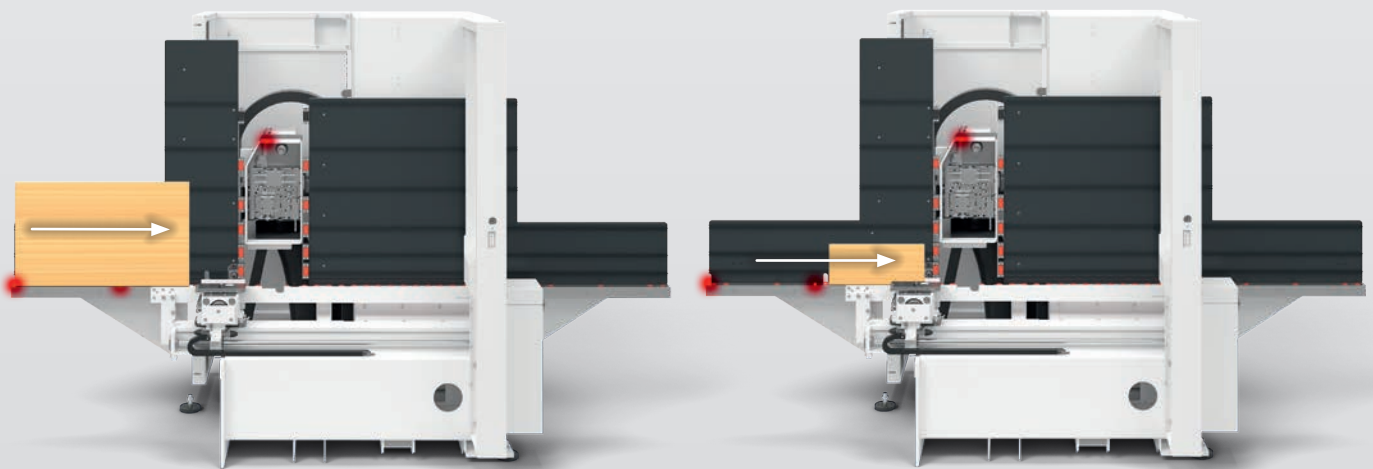
**Workpiece clamping device**

- Easy adjustment of the clamping device (manually) to the workpiece thickness (clamping device stroke 10 mm). For differences in the workpiece thickness of up to 10 mm it is not necessary to manually adjust the clamping device.

# Option – Plausibility Check

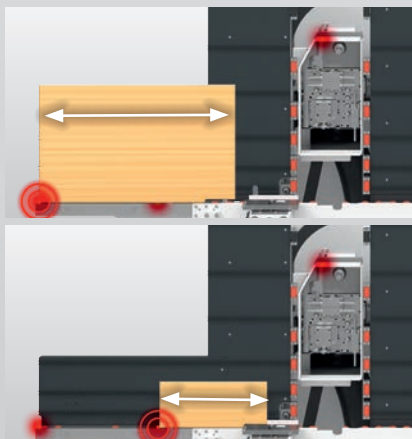
## BENEFIT FROM ADDITIONAL SAFEGUARDING OF PROCESSES

Control of the workpiece by sensor technology in X- and Y-direction. Comparison with the values in the database. If the defined tolerance value is exceeded, the current process stops. At the same time the operator receives a message to correct the workpiece. This way you remain on the safe side.



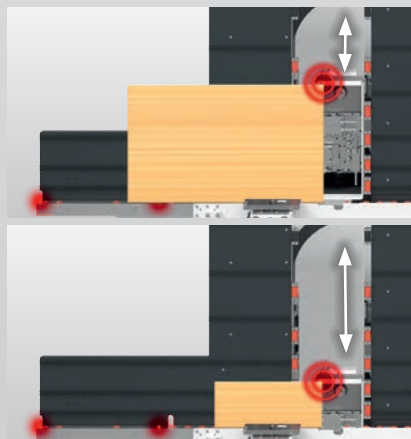
### Step 1:

- Positioning the workpiece



### Step 2:

- Control of the workpiece by sensor technology in X-direction. Depending on the workpiece dimensions the shortest distance to the next sensor is selected.



### Step 3:

- Control of the workpiece by sensor technology in Y-direction



### Step 4:

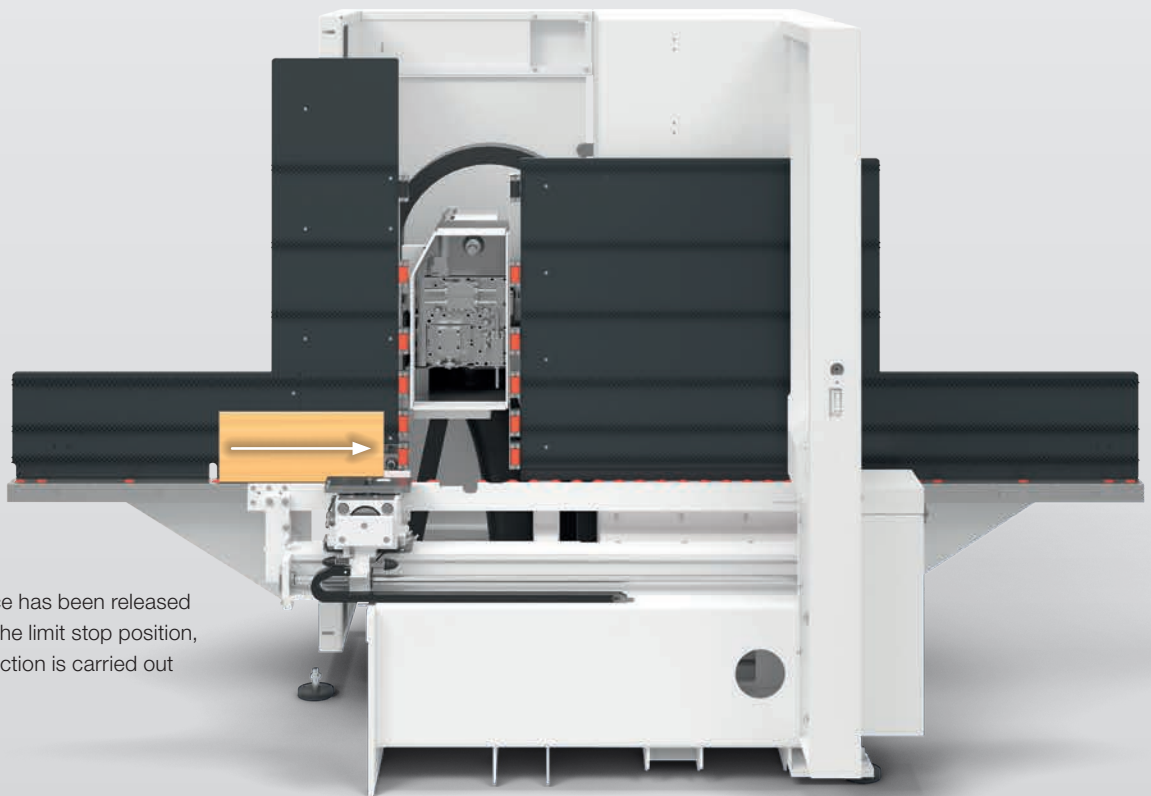
- Balancing the determined values with the program data:
- Tolerance of values < 5 mm – Program is continued.
- Tolerance of values > 5 mm – Program is stopped, advice to the operator to carry out the corrections.



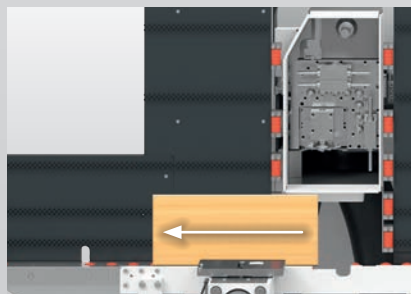
# Option – Length-dependent processing in X-direction

## AUTOMATIC ADJUSTMENT OF DRILLINGS DEPENDING ON WORKPIECE DIMENSIONS

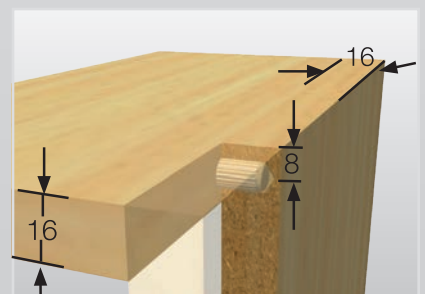
After the workpiece has been released for processing its length is measured accurately by a measuring run. Dimension-dependent drillings are then corrected automatically by possibly determined tolerances. You save time and gain quality.



- After the workpiece has been released for processing at the limit stop position, a test run in X-direction is carried out (value 1).

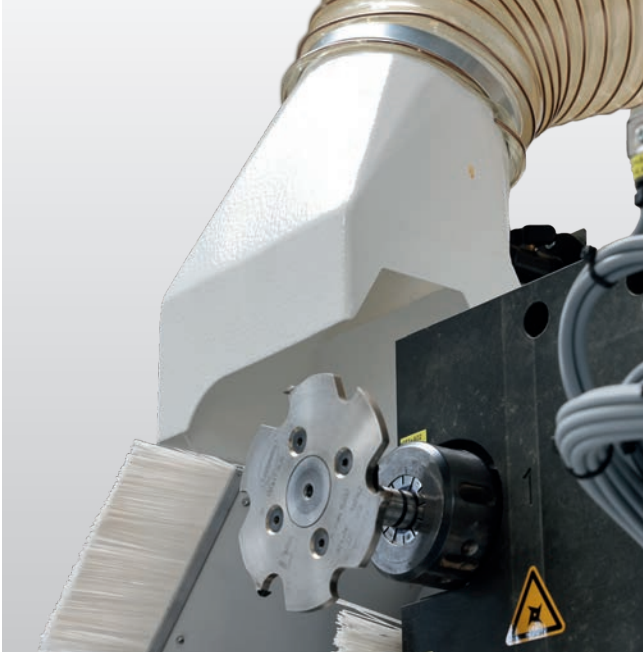


- Determination of exact workpiece length (value 2).



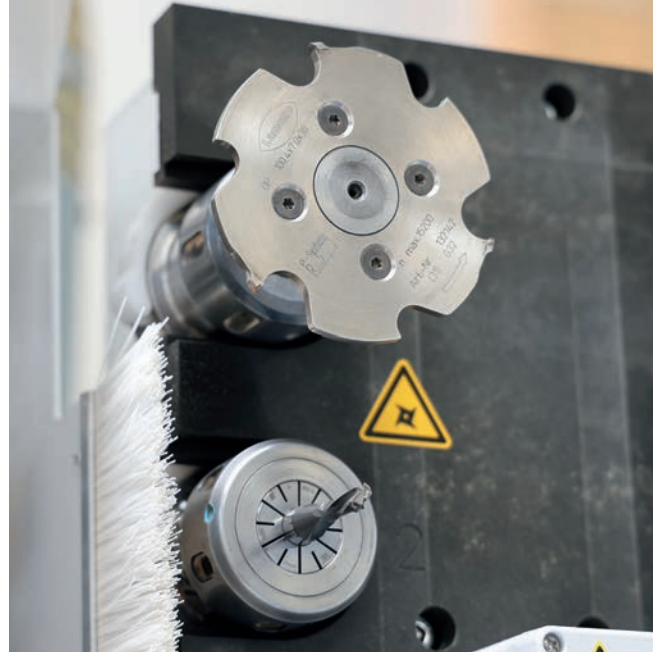
- Drills depending on dimensions are then automatically corrected by possibly determined tolerances.

# Options



### Option suction hood

- Enhancement of the suction power in the area of the routing unit for larger cutting cross-sections



### Option Clamex routing

- Horizontal processing with Clamex disc router
- Vertical processing with Clamex end mill

# Everything at a glance...

	Working length		Routing spindle		Drilling gear				2. grooving saw	Tool changer	Doweling
	2,500 mm	3,050 mm	ETP 5 kW	HSK 10 kW	V8 H6 N	V13 H6 N	V15 H10 N	2*V10 H8 N			
DRILLTEQ V-200	✓	○	✓	-	✓	-	-	-	-	-	-
DRILLTEQ V-200	✓	○	○	○	-	✓	-	-	-	4-fold	-
DRILLTEQ V-500	-	✓	-	✓	-	-	✓	-	○	4-fold	○
DRILLTEQ V-500	-	✓	-	✓	-	-	-	✓	-	4-fold	○

# Application examples



- Continuous back panel groove
- Planar drilling operations for eccentric connecting fitting
- Classical dowel holes in the front
- Illustration shows the Minifix connector from Häfele



- Continuous back panel groove
- Front side routing with T-slot routing cutter
- Illustration shows the removable Clamex P-connector from Lamello

## Equipment

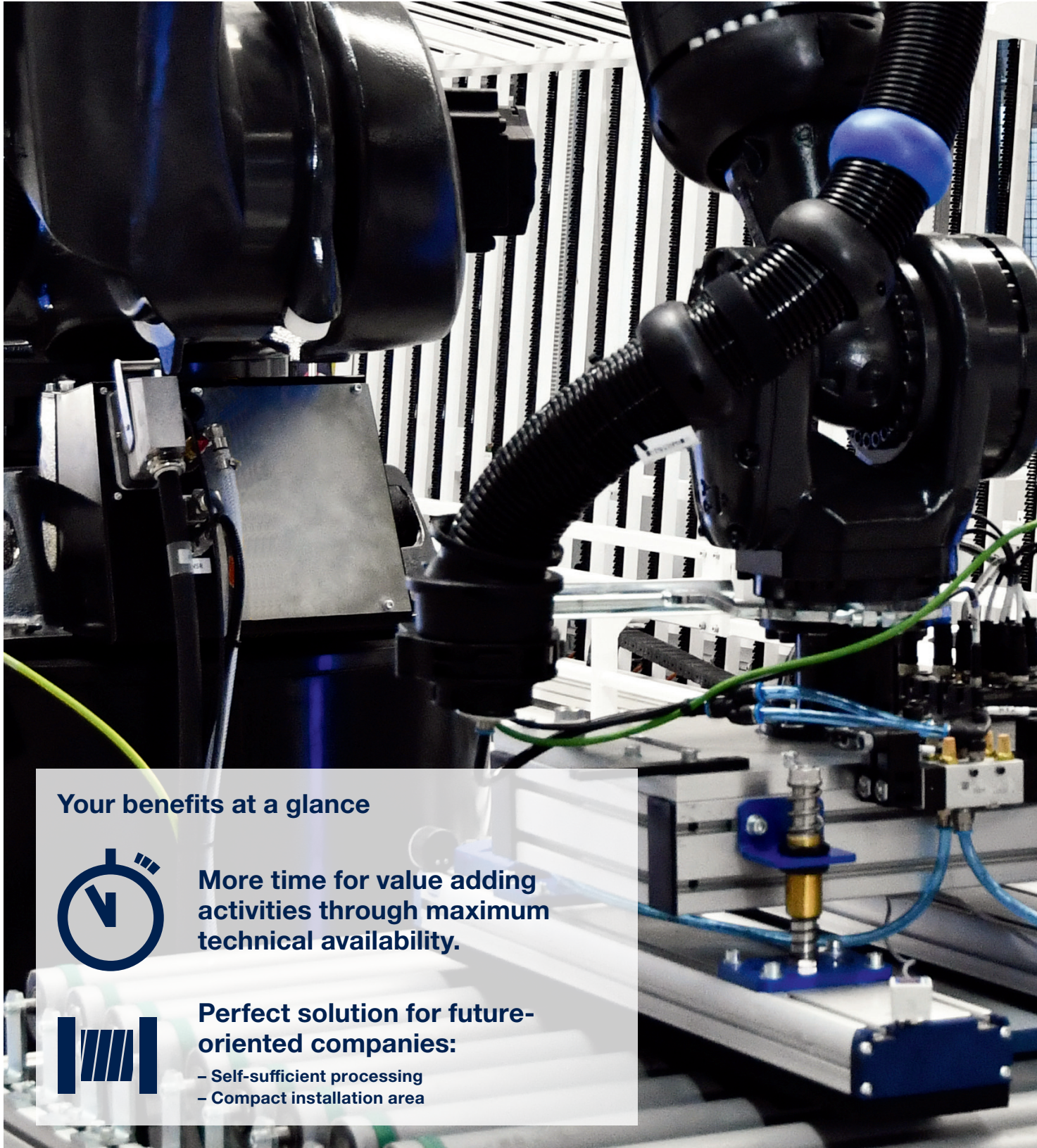
Plausibility check	Length-dependent processing in X-direction	Quick-change system	Return	Automatic workpiece thickness adjustment	Workpiece clamping device	tapio-ready	cabinetCreator	Robot connection	Cell control	Setup time
<input checked="" type="checkbox"/>	<input type="checkbox"/>	<input checked="" type="checkbox"/>	-	<input checked="" type="checkbox"/>	1	<input checked="" type="checkbox"/>	<input type="checkbox"/>	<input type="checkbox"/>	<input type="checkbox"/>	⇒ 0
<input checked="" type="checkbox"/>	<input type="checkbox"/>	<input checked="" type="checkbox"/>	-	<input checked="" type="checkbox"/>	1	<input checked="" type="checkbox"/>	<input type="checkbox"/>	<input type="checkbox"/>	<input type="checkbox"/>	⇒ 0
<input checked="" type="checkbox"/>	<input type="checkbox"/>	<input checked="" type="checkbox"/>	<input type="checkbox"/>	<input checked="" type="checkbox"/>	2	<input checked="" type="checkbox"/>	<input type="checkbox"/>	<input type="checkbox"/>	<input type="checkbox"/>	⇒ 0
<input checked="" type="checkbox"/>	<input type="checkbox"/>	<input checked="" type="checkbox"/>	<input type="checkbox"/>	<input checked="" type="checkbox"/>	2	<input checked="" type="checkbox"/>	<input type="checkbox"/>	<input type="checkbox"/>	<input type="checkbox"/>	⇒ 0

Standard:

Option:

## Option – Robot Connection

DRILLTEQ V-200 with robot. Safe, precise, automatic handling of workpieces for more efficient production.



### Your benefits at a glance

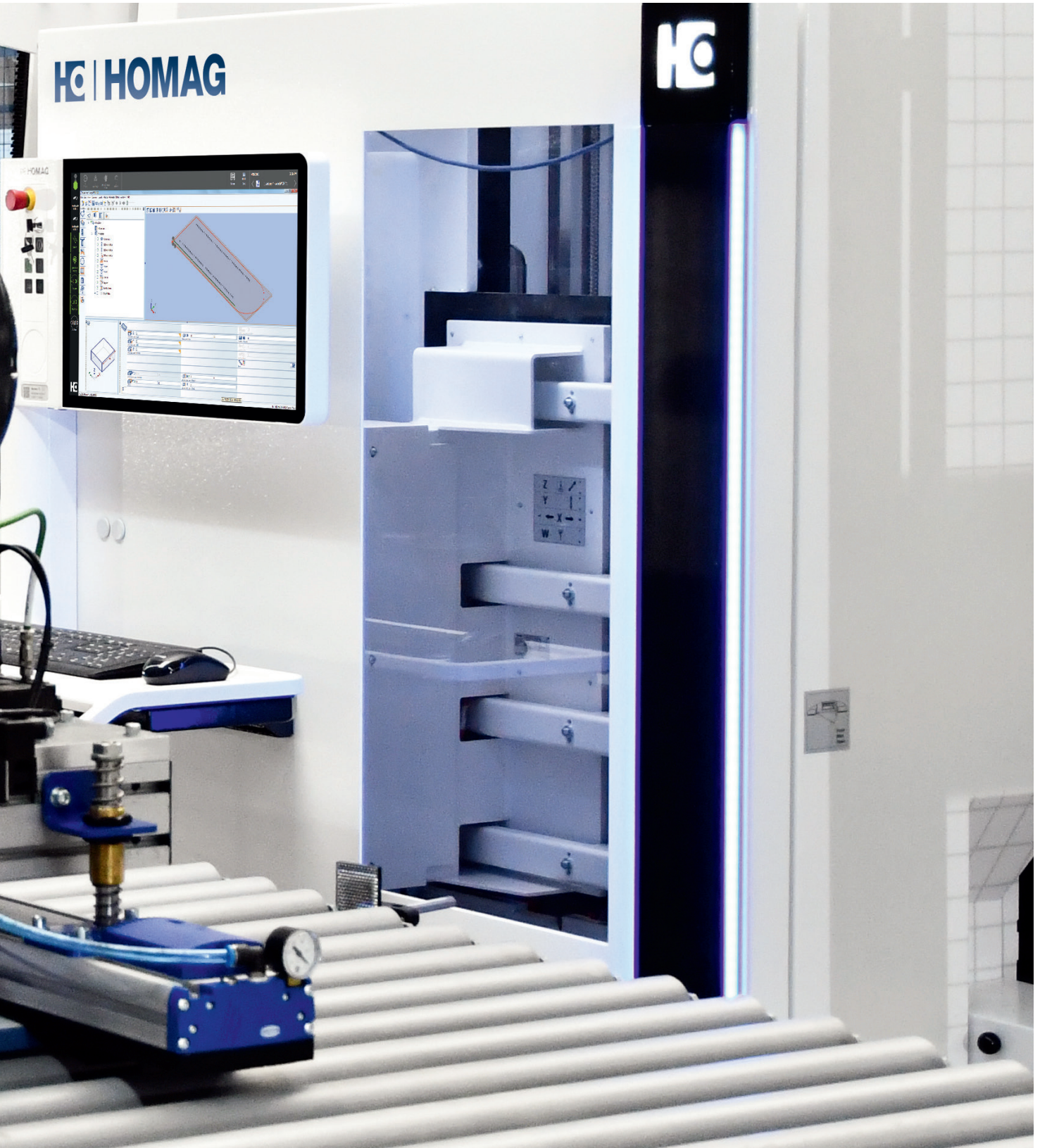


**More time for value adding activities through maximum technical availability.**



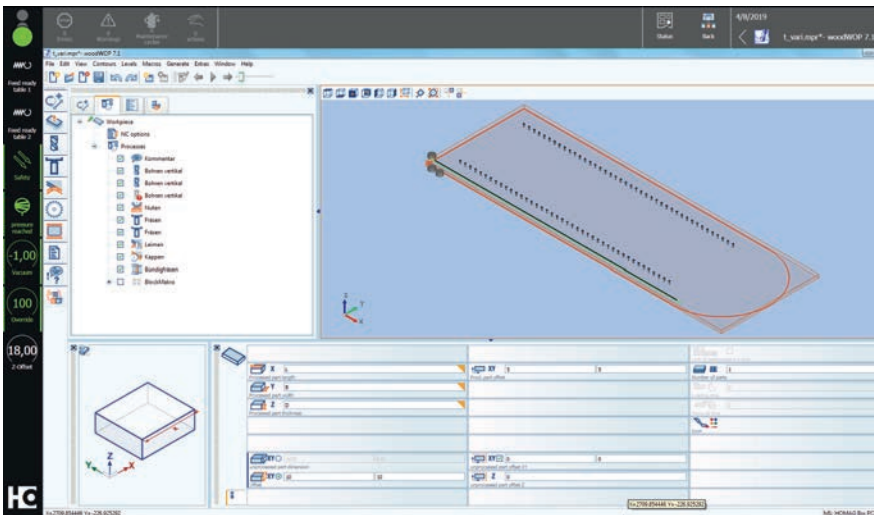
**Perfect solution for future-oriented companies:**

- Self-sufficient processing
- Compact installation area



# All inclusive – Software

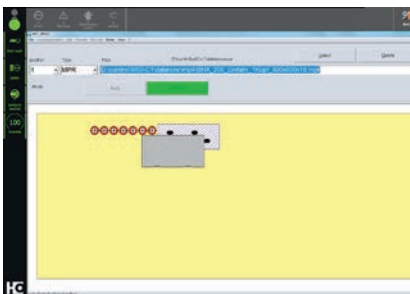
**WITH THIS SOFTWARE PACKAGE YOU ARE »READY TO RACE«.** You will receive one of the most established CNC-programming systems, the woodWOP software, which has proven itself by more than 30.000 installations worldwide.



**Please use our website!**  
 Worldwide largest forum for woodWOP:  
[forum.homag.com](http://forum.homag.com)

## woodWOP | License Machine

- Fast and intuitive operation thanks to simple, direct navigation
- Select from a choice of variables for flexible variable programming
- Quickly create individual subprograms
- Increased programming security through 3D images of workpieces, processing and clamping equipment



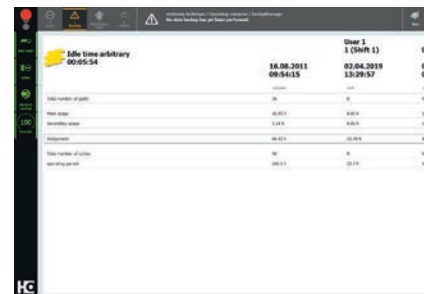
## Slot assignment

- Simple control of main machine functions through soft keys
- Graphical configuration
- Automatic mirroring of workpieces



## woodWOP DXF Basic

- Interface for CAD-Data Import
- Basis to generate woodWOP programs

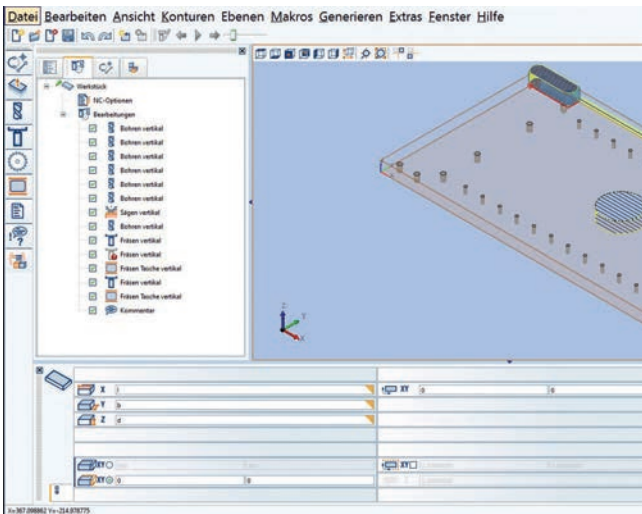


## Machine data acquisition MMR Basic

- Record quantities and actual operating times on the machine
- Integrated maintenance instructions for optimum time and quantity-based planning, as well as performing maintenance

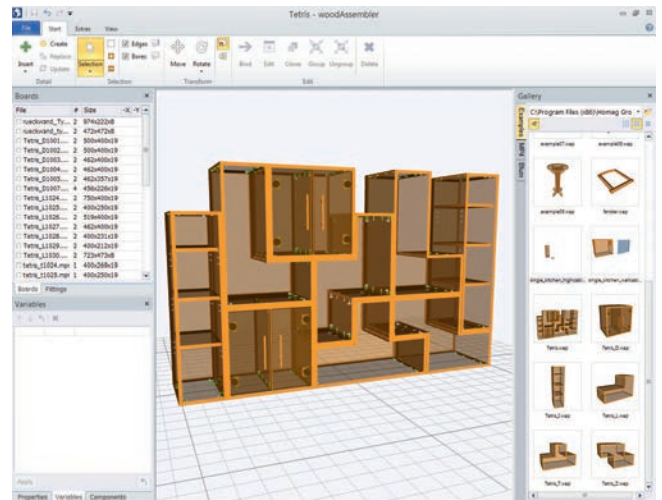
# Option – Software

WITH ADDITIONAL SOFTWARE MODULES you can further optimize your processes.



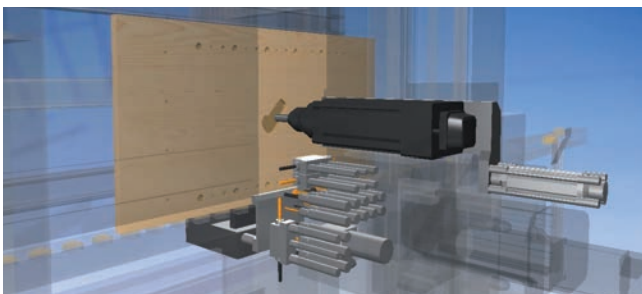
## woodWOP | License Office

- Single user or network licenses available
- Incl. DXF-Import CAD-Plugin to create your own CAD drawings on the machine and at the workplace



## woodAssembler

- To visualize woodWOP programs (MPR) in 3D
- Enables the construction of individual workpieces to finished objects



## 3D CNC-Simulator

- Simulates the processing acc. to the order set in the NC program
- Allows time calculation

## ADDITIONAL SOFTWARE

1. woodWOP Office
2. 3D CNC-Simulator
3. woodAssembler



Package

## Apps and digital assistants.

### Quick and easy support in your machine environment.

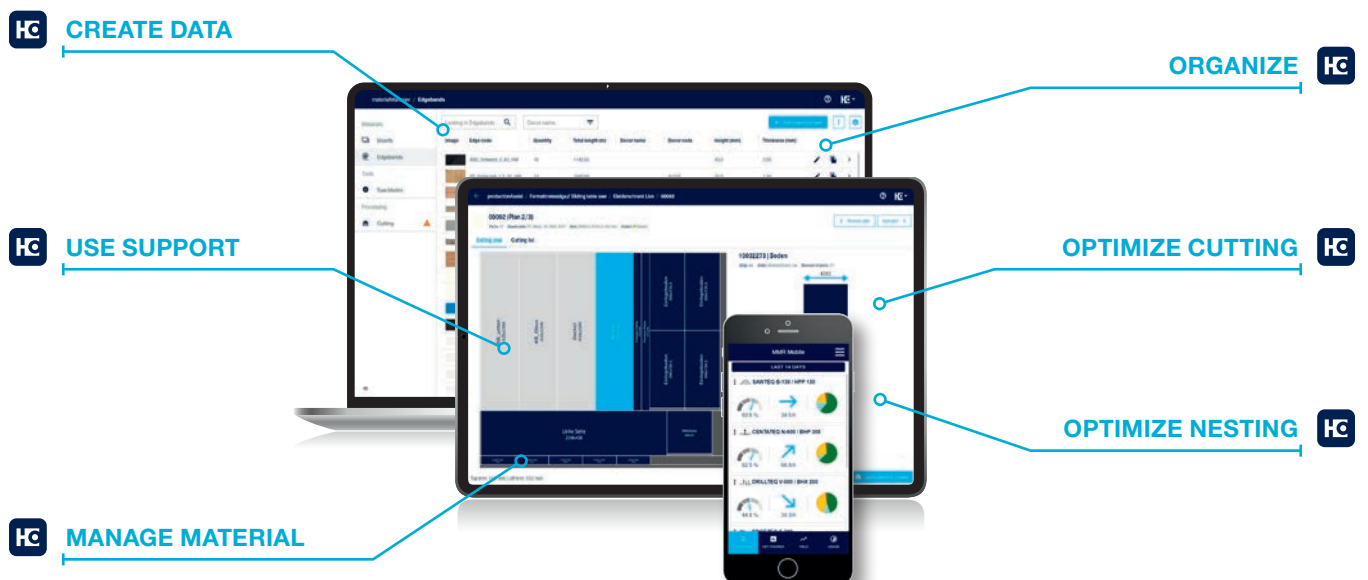
Some people still use pen and paper to create their cutting patterns. But they look at their smartphone if they want to know what the weather is like – instead of looking out of the window. We asked ourselves: why not combine the best of both? Our apps and digital solutions make your everyday work easier: machines, material, tools, cutting patterns, components – you always have everything in your pocket or on your desk.

#### EXCERPTS FROM YOUR FEEDBACK:

- Are there simple solutions that can eliminate various obstacles in my day-to-day work (e.g. when organizing materials or sorting parts)?
- Is there a way to slowly approach using digital assistants?
- Which tools can you try out simply and easily without having to invest huge sums of money straight away?

#### OUR ANSWER? SMART AND POWERFUL SOLUTIONS:

- ✓ Always low investment
- ✓ Always up to date (no updates necessary)
- ✓ Always easy to use (no complex software)
- ✓ Always helpful







## THE ADVANTAGES AT A GLANCE

- No investment, update or maintenance costs  
Low starting price, no unplanned financial expense
- Licenses are independent of the user  
Any number of employees can use the application without incurring additional costs
- Independent of hardware and operating system  
Can be used anywhere, anytime
- Open system – import possible from almost all systems (ERP, industry software, CAD/CAM, Excel, CSV)  
No obligation to use specific software systems
- Simple, smart operation  
Minimal training required
- More efficient production  
Jobs completed more quickly, more safely and in higher quality



More information at  
[digital.homag.com](https://digital.homag.com)

# VALYOU

Our Mission, Your Performance.

## Fast support:

94% resolution rate  
via our hotline

## Close to you:

1,350 service experts worldwide

## We get things moving:

Over 1,000 worldwide spare parts  
shipments each day

## No one else has that:

Electronic documentation on over  
150,000 machines, available in 28  
languages

## LIFE CYCLE SERVICES

**Improved performance, more efficient processes, faster help, assurance of availability and smarter working.**

VAL YOU comes from VALUE ADDED. Our objective is derived from this name: We create added value for your business by helping you get the most out of your processes. Every day.

# Technical Data



Dimensions in mm

\* A corresponding safety distance must be maintained in the in and outfeed direction! (See documentation)

TECHNICAL DATA			
Workpiece dimensions max.	L x W x T	mm	2,500 x 850 x 60 / optional 3,050
Workpiece dimensions min.	L x W x T	mm	200 x 70 x 12
Vector speed		m/min	(X - Y) 50 - (Z) 15
Compressed air required		bar	7
Compressed air connection		inch	R 1/2
Dust extraction port		mm	Ø 160
Dust extraction volume		m <sup>3</sup> /h	min. 2,170
Electrical power – total connection load		kW	11,5
Total machine weight		kg	approx. 1,580



**HOMAG Group AG**

info@homag.com  
www.homag.com

**YOUR SOLUTION**